

# Anti-SLC10A7 Antibody

ER64971



<b>Product Type:</b>	Rabbit polyclonal IgG, primary antibodies
<b>Species reactivity:</b>	Human, Mouse, Rat
<b>Applications:</b>	WB
<b>Molecular Wt:</b>	39 kDa

**Description:** Belongs to the sodium:bile acid symporter family.

**Immunogen:** The antiserum was produced against synthesized peptide derived from human SLC10A7. AA range:168-217

**Positive control:** Heart,Kidney,Prostate,

**Database links:** SwissProt: Q0GE19 Human

**Recommended Dilutions:**  
**WB** 1:500-1:2000

**Storage Buffer:** Liquid in PBS containing 50% glycerol, 0.5% BSA and 0.02% sodium azide.

**Storage Instruction:** Store at +4°C after thawing. Aliquot store at -20°C or -80°C. Avoid repeated freeze / thaw cycles.

**Purity:** Immunogen affinity purified.

Hangzhou HuaAn Biotechnology Co.,Ltd.

Orders: 0086-571-88062880

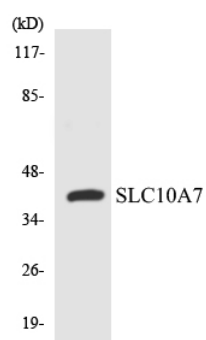
Technical:0086-571-89986345

Service mail: support@huabio.cn

www.huabio.cn



## Images



**Fig1:** Western blot analysis of the lysates from 293 cells using SLC10A7 antibody.

**Note:** All products are "FOR RESEARCH USE ONLY AND ARE NOT INTENDED FOR DIAGNOSTIC OR THERAPEUTIC USE".