

Anti-SERGEF Antibody

ER64936



Product Type:	Rabbit polyclonal IgG, primary antibodies
Species reactivity:	Human
Applications:	WB
Molecular Wt:	50 kDa

Description: Probable guanine nucleotide exchange factor (GEF), which may be involved in the secretion process. PTM:Phosphorylated upon DNA damage, probably by ATM or ATR. Contains 7 RCC1 repeats. subunit:Interacts with SEC5. The interaction occurs only in the presence of magnesium or manganese and is stimulated by dCTP or GTP.

Immunogen: The antiserum was produced against synthesized peptide derived from human SERGEF. AA range:179-228

Positive control: Fetal brain,Ovary,

Database links: SwissProt: Q9UGK8 Human

Recommended Dilutions:
WB 1:500-1:2000

Storage Buffer: Liquid in PBS containing 50% glycerol, 0.5% BSA and 0.02% sodium azide.

Storage Instruction: Store at +4°C after thawing. Aliquot store at -20°C or -80°C. Avoid repeated freeze / thaw cycles.

Purity: Immunogen affinity purified.

Hangzhou HuaAn Biotechnology Co.,Ltd.

Orders: 0086-571-88062880

Technical:0086-571-89986345

Service mail: support@huabio.cn

www.huabio.cn



Images

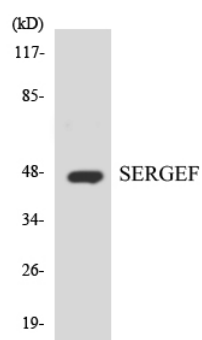


Fig1: Western blot analysis of the lysates from HT-29 cells using SERGEF antibody.

Note: All products are "FOR RESEARCH USE ONLY AND ARE NOT INTENDED FOR DIAGNOSTIC OR THERAPEUTIC USE".