

Anti-RPA135 Antibody

ER64882



Product Type:	Rabbit polyclonal IgG, primary antibodies
Species reactivity:	Human, Mouse, Rat
Applications:	WB, IHC-P
Molecular Wt:	125 kDa

Description: Eukaryotic RNA polymerase I (pol I) is responsible for the transcription of ribosomal RNA (rRNA) genes and production of rRNA, the primary component of ribosomes. Pol I is a multisubunit enzyme composed of 6 to 14 polypeptides, depending on the species. Most of the mass of the pol I complex derives from the 2 largest subunits, Rpa1 and Rpa2 in yeast. POLR1B is homologous to Rpa2 (Seither and Grummt, 1996)

Immunogen: Synthesized peptide derived from the Internal region of human RPA135.

Positive control: Eye, Pancreas, Skin, Testis,

Database links: SwissProt: Q9H9Y6 Human

Recommended Dilutions:

WB	1:500-1:2000
IHC-P	1:100-1:300

Storage Buffer: Liquid in PBS containing 50% glycerol, 0.5% BSA and 0.02% sodium azide.

Storage Instruction: Store at +4°C after thawing. Aliquot store at -20°C or -80°C. Avoid repeated freeze / thaw cycles.

Purity: Immunogen affinity purified.

Hangzhou HuaAn Biotechnology Co.,Ltd.

Orders: 0086-571-88062880

Technical:0086-571-89986345

Service mail: support@huabio.cn

www.huabio.cn



Images

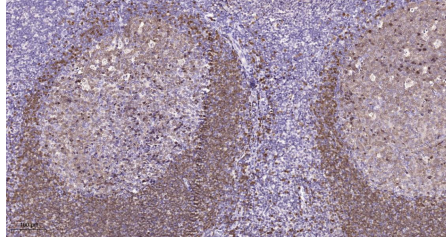


Fig1: Immunohistochemical analysis of paraffin-embedded human tonsil. 1, Tris-EDTA,pH9.0 was used for antigen retrieval. 2 Antibody was diluted at 1:200(4° overnight.3,Secondary antibody was diluted at 1:200(room temperature, 45min).

Note: All products are “FOR RESEARCH USE ONLY AND ARE NOT INTENDED FOR DIAGNOSTIC OR THERAPEUTIC USE”.
