

# Anti-RNF149 Antibody

## ER64875



**Product Type:** Rabbit polyclonal IgG, primary antibodies

**Species reactivity:** Human, Mouse

**Applications:** IHC-P, WB

**Description:** domain:The RING-type zinc finger domain mediates binding to an E2 ubiquitin-conjugating enzyme. pathway:Protein modification; protein ubiquitination. Contains 1 PA (protease associated) domain. Contains 1 RING-type zinc finger.

**Immunogen:** The antiserum was produced against synthesized peptide derived from human RNF149. AA range:211-260

**Positive control:** Brain,Cervix,Placenta,Teratocarcinoma,

**Database links:** SwissProt: Q8NC42 Human

**Recommended Dilutions:**

**IHC-P** 1:100-1:300

**WB** 1:1,000

**Storage Buffer:** Liquid in PBS containing 50% glycerol, 0.5% BSA and 0.02% sodium azide.

**Storage Instruction:** Store at +4°C after thawing. Aliquot store at -20°C or -80°C. Avoid repeated freeze / thaw cycles.

**Purity:** Immunogen affinity purified.

Hangzhou Huaan Biotechnology Co., Ltd.

Orders:0086-571-88062880

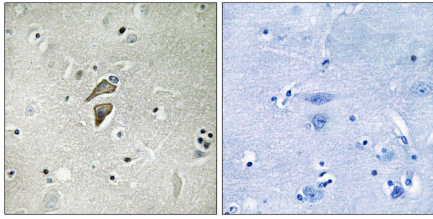
Technical:0086-571-89986345

Service mail:support@huabio.cn

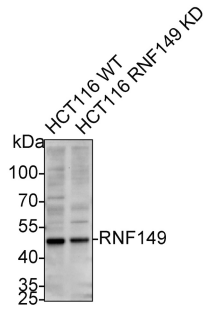
 华安生物  
HUABIO  
www.huabio.cn

Applications:WB=Western blot IHC-P=Immunohistochemistry (paraffin) IF-Cell=Immunofluorescence (Cell) IF-Tissue=Immunofluorescence (Tissue) FC=Flow cytometry IP=Immunoprecipitation

## Images



**Fig1:** Immunohistochemistry analysis of paraffin-embedded human brain tissue, using RNF149 Antibody. The picture on the right is blocked with the synthesized peptide.



**Fig2:** Western blot analysis of RNF149 with anti-RNF149 antibody (ER64875) at 1/1,000 dilution.

Lane 1: Wild-type HCT116 whole cell lysate.

Lane 2: RNF149 knockdown HCT116 whole cell lysate.

**Note:** All products are "FOR RESEARCH USE ONLY AND ARE NOT INTENDED FOR DIAGNOSTIC OR THERAPEUTIC USE".

Hangzhou Huaan Biotechnology Co., Ltd.

Orders:0086-571-88062880

Technical:0086-571-89986345

Service mail:support@huabio.cn

华安生物  
HUABIO  
www.huabio.cn