

# Anti-RBAK Antibody

ER64768



<b>Product Type:</b>	Rabbit polyclonal IgG, primary antibodies
<b>Species reactivity:</b>	Human, Mouse
<b>Applications:</b>	WB
<b>Molecular Wt:</b>	85 kDa

**Description:** This gene encodes a nuclear protein which interacts with the tumor suppressor retinoblastoma 1. The two interacting proteins are thought to act as a transcriptional repressor for promoters which are activated by the E2F1 transcription factor. This protein contains a Kruppel-associated box (KRAB), which is a transcriptional repressor motif. Read-through transcripts that include exons from the downstream gene LOC389458 are expressed from this locus.

**Immunogen:** The antiserum was produced against synthesized peptide derived from human RBAK. AA range: 1-50

**Positive control:** Brain,Uterus,

**Database links:** SwissProt: Q9NYW8 Human

**Recommended Dilutions:**

**WB** 1:500-1:2000

**Storage Buffer:** Liquid in PBS containing 50% glycerol, 0.5% BSA and 0.02% sodium azide.

**Storage Instruction:** Store at +4°C after thawing. Aliquot store at -20°C or -80°C. Avoid repeated freeze / thaw cycles.

**Purity:** Immunogen affinity purified.

Hangzhou HuaAn Biotechnology Co.,Ltd.

Orders: 0086-571-88062880

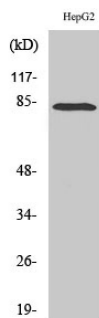
Technical:0086-571-89986345

Service mail: support@huabio.cn

www.huabio.cn



Images



**Fig1:** Western Blot analysis of HepG2 cell lysate using RBAK Polyclonal Antibody.

---

**Note:** All products are "FOR RESEARCH USE ONLY AND ARE NOT INTENDED FOR DIAGNOSTIC OR THERAPEUTIC USE".

---