

Anti-RASSF7 Antibody

ER64766



Product Type: Rabbit polyclonal IgG, primary antibodies

Species reactivity: Human, Mouse

Applications: IHC-P

Description: Contains 1 Ras-associating domain.

Immunogen: The antiserum was produced against synthesized peptide derived from human RASSF7. AA range:159-208

Positive control: PCR rescued clones,Placenta,

Database links: SwissProt: Q02833 Human

Recommended Dilutions:

IHC-P 1:100-1:300

Storage Buffer: Liquid in PBS containing 50% glycerol, 0.5% BSA and 0.02% sodium azide.

Storage Instruction: Store at +4°C after thawing. Aliquot store at -20°C or -80°C. Avoid repeated freeze / thaw cycles.

Purity: Immunogen affinity purified.

Hangzhou HuaAn Biotechnology Co.,Ltd.

Orders: 0086-571-88062880

Technical:0086-571-89986345

Service mail: support@huabio.cn

www.huabio.cn



Images

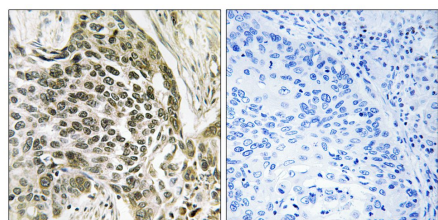


Fig1: Immunohistochemistry analysis of paraffin-embedded human lung carcinoma tissue, using RASSF7 Antibody. The picture on the right is blocked with the synthesized peptide.

Note: All products are “FOR RESEARCH USE ONLY AND ARE NOT INTENDED FOR DIAGNOSTIC OR THERAPEUTIC USE”.
