

Anti-Rab 6C Antibody

ER64728



Product Type:	Rabbit polyclonal IgG, primary antibodies
Species reactivity:	Human, Mouse, Rat
Applications:	WB
Molecular Wt:	28 kDa

Description: Protein transport. Regulator of membrane traffic from the Golgi apparatus towards the endoplasmic reticulum (ER). Has a low GTPase activity. PTM:Phosphorylated upon DNA damage, probably by ATM or ATR. Belongs to the small GTPase superfamily. Rab family. subunit:Interacts with SCYL1BP1. Interacts with VSP52 and RABGAP1. Isoform 1 interacts with RAB6KIFL but not isoform 2. Isoforms 1 and 2 interact with BICD1 and BICD2. Interacts with TMF1. tissue specificity:Ubiquitous.

Immunogen: The antiserum was produced against synthesized peptide derived from human RAB6C. AA range:165-214

Positive control: Brain,Colon carcinoma,Heart,Kidney,Pancreatic tumor,Placenta,Platel

Database links: SwissProt: Q9H0N0 Human

Recommended Dilutions:

WB 1:500-1:2000

Storage Buffer: Liquid in PBS containing 50% glycerol, 0.5% BSA and 0.02% sodium azide.

Storage Instruction: Store at +4°C after thawing. Aliquot store at -20°C or -80°C. Avoid repeated freeze / thaw cycles.

Purity: Immunogen affinity purified.

Hangzhou HuaAn Biotechnology Co.,Ltd.

Orders: 0086-571-88062880

Technical:0086-571-89986345

Service mail: support@huabio.cn

www.huabio.cn



Images

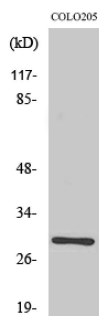


Fig1: Western Blot analysis of COLO205 cell lysate using Rab 6C Polyclonal Antibody

Note: All products are "FOR RESEARCH USE ONLY AND ARE NOT INTENDED FOR DIAGNOSTIC OR THERAPEUTIC USE".