

Anti-Rab 20 Antibody

ER64712



Product Type:	Rabbit polyclonal IgG, primary antibodies
Species reactivity:	Human
Applications:	WB, IHC-P
Molecular Wt:	28 kDa

Description: Plays a role in apical endocytosis/recycling. Belongs to the small GTPase superfamily. Rab family. subcellular location:Highly enriched on apical endocytic structures in polarized epithelial cells of kidney proximal tubules. tissue specificity:Low or absent expression in normal pancreas and stronger expression in 15 of 18 exocrine pancreatic adenocarcinomas (at protein level).

Immunogen: The antiserum was produced against synthesized peptide derived from human RAB20. AA range:115-164

Positive control: Lung,

Database links: SwissProt: Q9NX57 Human

Recommended Dilutions:

WB	1:500-1:2000
IHC-P	1:100-1:300

Storage Buffer: Liquid in PBS containing 50% glycerol, 0.5% BSA and 0.02% sodium azide.

Storage Instruction: Store at +4°C after thawing. Aliquot store at -20°C or -80°C. Avoid repeated freeze / thaw cycles.

Purity: Immunogen affinity purified.

Hangzhou HuaAn Biotechnology Co.,Ltd.

Orders: 0086-571-88062880

Technical:0086-571-89986345

Service mail: support@huabio.cn

www.huabio.cn



Images

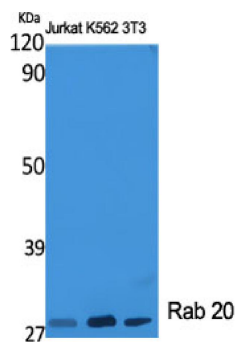


Fig1: Western Blot analysis of jurkat, K562, 3T3 cell lysates using Rab 20 Polyclonal Antibody diluted at 1:2000.

Note: All products are "FOR RESEARCH USE ONLY AND ARE NOT INTENDED FOR DIAGNOSTIC OR THERAPEUTIC USE".