

Anti-PI 3 Kinase p85 alpha/gamma Antibody

ER64588



Product Type:	Rabbit polyclonal IgG, primary antibodies
Species reactivity:	Human, Mouse, Rat, Monkey
Applications:	WB, IHC-P, IF-Tissue
Molecular Wt:	54/83 kDa

Description: Phosphatidylinositol 3-kinase phosphorylates the inositol ring of phosphatidylinositol at the 3-prime position. The enzyme comprises a 110 kD catalytic subunit and a regulatory subunit of either 85, 55, or 50 kD. This gene encodes the 85 kD regulatory subunit. Phosphatidylinositol 3-kinase plays an important role in the metabolic actions of insulin, and a mutation in this gene has been associated with insulin resistance. Alternative splicing of this gene results in four transcript variants encoding different isoforms.

Immunogen: The antiserum was produced against synthesized peptide derived from human PI3-kinase p85-alpha/gamma. AA range:436-485

Positive control: Brain, Epithelium, Lung, Placenta, Skeletal muscle,

Database links: SwissProt: P27986 Human | Q92569 Human

Recommended Dilutions:

WB	1:500-1:2000
IHC-P	1:100-1:300
IF-Tissue	1:100-1:500

Storage Buffer: Liquid in PBS containing 50% glycerol, 0.5% BSA and 0.02% sodium azide.

Storage Instruction: Store at +4°C after thawing. Aliquot store at -20°C or -80°C. Avoid repeated freeze / thaw cycles.

Purity: Immunogen affinity purified.

Hangzhou Huaan Biotechnology Co., Ltd.

Orders:0086-571-88062880

Technical:0086-571-89986345

Service mail:support@huabio.cn

 华安生物
HUABIO
www.huabio.cn

Images

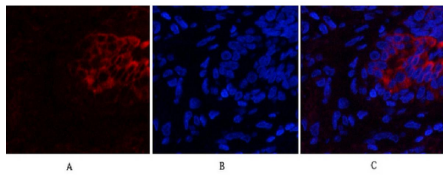


Fig1: Immunofluorescence analysis of human-lung tissue. 1,PI 3-kinase p85 α / γ Polyclonal Antibody(red) was diluted at 1:200(4°C,overnight). 2, Cy3 labeled Secondary antibody was diluted at 1:300(room temperature, 50min).3, Picture B: DAPI(blue) 10min. Picture A:Target. Picture B: DAPI. Picture C: merge of A+B

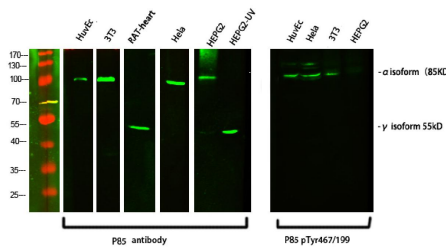


Fig2: Western Blot analysis of HUVEC, 3T3, Hela, HepG2, HepG2-UV cell lysates and rat heart tissue lysate using primary antibody diluted at 1:1000(4°C overnight). Secondary antibody:Goat Anti-rabbit IgG IRDye 800(diluted at 1:5000, 25°C, 1 hour)

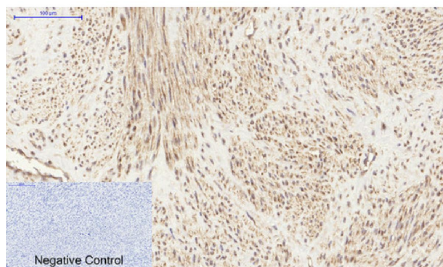


Fig3: Immunohistochemical analysis of paraffin-embedded Human-uterus tissue. 1,PI 3-kinase p85 α / γ Polyclonal Antibody was diluted at 1:200(4°C,overnight). 2, Sodium citrate pH 6.0 was used for antibody retrieval(>98°C,20min). 3,Secondary antibody was diluted at 1:200(room temperature, 30min). Negative control was used by secondary antibody only.

Note: All products are "FOR RESEARCH USE ONLY AND ARE NOT INTENDED FOR DIAGNOSTIC OR THERAPEUTIC USE".

Hangzhou Huaan Biotechnology Co., Ltd.

Orders:0086-571-88062880

Technical:0086-571-89986345

Service mail:support@huabio.cn

华安生物
HUABIO
www.huabio.cn