

Anti-PBFE Antibody

ER64529



Product Type:	Rabbit polyclonal IgG, primary antibodies
Species reactivity:	Human, Rat
Applications:	WB, IHC-P
Molecular Wt:	80 kDa

Description: catalytic activity:(3S)-3-hydroxyacyl-CoA = trans-2(or 3)-enoyl-CoA + H₂O. catalytic activity:(3Z)-dodec-3-enoyl-CoA = (2E)-dodec-2-enoyl-CoA. catalytic activity:(S)-3-hydroxyacyl-CoA + NAD(+) = 3-oxoacyl-CoA + NADH. disease:Absent in patients suffering with peroxisomal disorders such as Zellweger syndrome, neonatal adrenoleukodystrophy and infantile Refsum disease. pathway:Lipid metabolism; fatty acid beta-oxidation. In the C-terminal section; belongs to the 3-hydroxyacyl-CoA dehydrogenase family. In the N-terminal section; belongs to the enoyl-CoA hydratase/isomerase family. subunit:Monomer. tissue specificity:Liver and kidney. Lower amounts seen in the brain.

Immunogen: The antiserum was produced against synthesized peptide derived from human EHHADH. AA range:476-525

Database links: SwissProt: Q08426 Human

Recommended Dilutions:

WB	1:500-1:2000
IHC-P	1:100-1:300

Storage Buffer: Liquid in PBS containing 50% glycerol, 0.5% BSA and 0.02% sodium azide.

Storage Instruction: Store at +4°C after thawing. Aliquot store at -20°C or -80°C. Avoid repeated freeze / thaw cycles.

Purity: Immunogen affinity purified.

Hangzhou HuaAn Biotechnology Co.,Ltd.

Orders: 0086-571-88062880

Technical:0086-571-89986345

Service mail: support@huabio.cn

www.huabio.cn



Images

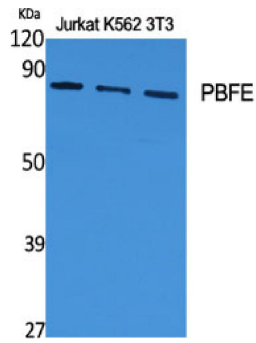


Fig1: Western Blot analysis of jurkat, K562, 3T3 cell lysate using PBFE Polyclonal Antibody

Note: All products are "FOR RESEARCH USE ONLY AND ARE NOT INTENDED FOR DIAGNOSTIC OR THERAPEUTIC USE".