

# Anti-PABP3 Antibody

ER64506



<b>Product Type:</b>	Rabbit polyclonal IgG, primary antibodies
<b>Species reactivity:</b>	Human
<b>Applications:</b>	WB, IHC-P
<b>Molecular Wt:</b>	70 kDa

**Description:** Messenger RNA stability and translation initiation are extensively under the control of poly(A)-binding proteins (PABP). See PABPC1 (MIM 604679) for background information.,

**Immunogen:** The antiserum was produced against synthesized peptide derived from human PABPC3. AA range:352-401

**Positive control:** Testis,

**Database links:** SwissProt: Q9H361 Human

**Recommended Dilutions:**

<b>WB</b>	1:500-1:2000
<b>IHC-P</b>	1:50-300

**Storage Buffer:** Liquid in PBS containing 50% glycerol, 0.5% BSA and 0.02% sodium azide.

**Storage Instruction:** Store at +4°C after thawing. Aliquot store at -20°C or -80°C. Avoid repeated freeze / thaw cycles.

**Purity:** Immunogen affinity purified.

Hangzhou HuaAn Biotechnology Co.,Ltd.

Orders: 0086-571-88062880

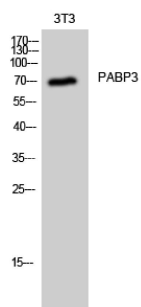
Technical:0086-571-89986345

Service mail: support@huabio.cn

www.huabio.cn



## Images



**Fig1:** Western Blot analysis of 3T3 cells using PABP3 Polyclonal Antibody

**Note:** All products are "FOR RESEARCH USE ONLY AND ARE NOT INTENDED FOR DIAGNOSTIC OR THERAPEUTIC USE".