

Anti-NIM1 Antibody

ER64194



Product Type: Rabbit polyclonal IgG, primary antibodies

Species reactivity: Human, Mouse

Applications: WB

Description: catalytic activity:ATP + a protein = ADP + a phosphoprotein. cofactor:Magnesium. enzyme regulation:Activated by phosphorylation at Thr-229, probably by autophosphorylation. Belongs to the protein kinase superfamily. CAMK Ser/Thr protein kinase family. Contains 1 protein kinase domain.

Immunogen: The antiserum was produced against synthesized peptide derived from human NIM1. AA range:347-396

Positive control: Brain,

Database links: SwissProt: Q8IY84 Human

Recommended Dilutions:

WB 1:500-1:2000

Storage Buffer: Liquid in PBS containing 50% glycerol, 0.5% BSA and 0.02% sodium azide.

Storage Instruction: Store at +4°C after thawing. Aliquot store at -20°C or -80°C. Avoid repeated freeze / thaw cycles.

Purity: Immunogen affinity purified.

Hangzhou HuaAn Biotechnology Co.,Ltd.

Orders: 0086-571-88062880

Technical:0086-571-89986345

Service mail: support@huabio.cn

www.huabio.cn



Images

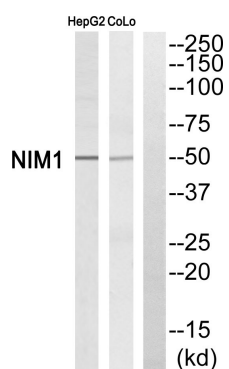


Fig1: Western blot analysis of NIM1 Antibody. The lane on the right is blocked with the NIM1 peptide.

Note: All products are "FOR RESEARCH USE ONLY AND ARE NOT INTENDED FOR DIAGNOSTIC OR THERAPEUTIC USE".