

# Anti-NGEP Antibody

## ER64185



<b>Product Type:</b>	Rabbit polyclonal IgG, primary antibodies
<b>Species reactivity:</b>	Human, Mouse
<b>Applications:</b>	WB, IHC-P, IF-Cell
<b>Molecular Wt:</b>	105 kDa

**Description:** This prostate-specific gene encodes a cytoplasmic protein, as well as a polytopic membrane protein which may serve as a target in prostate cancer diagnosis and immunotherapy. Alternative splicing results in multiple transcript variants encoding different isoforms.

**Immunogen:** The antiserum was produced against synthesized peptide derived from human TM16G. AA range:881-930

**Positive control:** Pancreas,

**Database links:** SwissProt: Q6IWH7 Human

### Recommended Dilutions:

<b>WB</b>	1:500-1:2000
<b>IHC-P</b>	1:100-1:300
<b>IF-cell</b>	1:200-1:1000

**Storage Buffer:** Liquid in PBS containing 50% glycerol, 0.5% BSA and 0.02% sodium azide.

**Storage Instruction:** Store at +4°C after thawing. Aliquot store at -20°C or -80°C. Avoid repeated freeze / thaw cycles.

**Purity:** Immunogen affinity purified.

Hangzhou Huaan Biotechnology Co., Ltd.

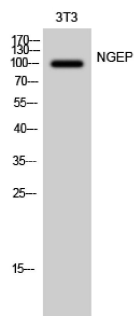
Orders:0086-571-88062880

Technical:0086-571-89986345

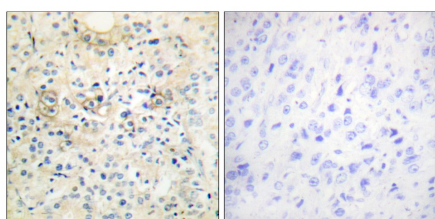
Service mail:support@huabio.cn

 华安生物  
HUABIO  
www.huabio.cn

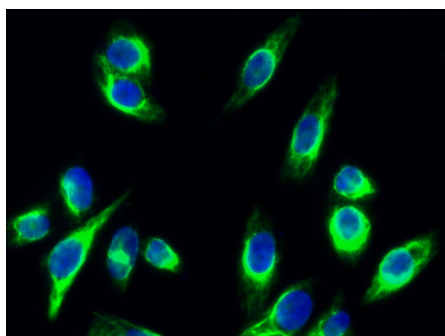
## Images



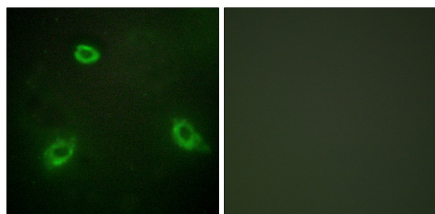
**Fig1:** Western Blot analysis of 3T3 cells using NGEP Polyclonal Antibody diluted at 1: 1000



**Fig2:** Immunohistochemistry analysis of paraffin-embedded human prostate carcinoma tissue, using TM16G Antibody. The picture on the right is blocked with the synthesized peptide.



**Fig3:** Immunofluorescence analysis of HeLa cell. NGEP Polyclonal Antibody (green) was diluted at 1:200 (4° overnight). Goat Anti Rabbit Alexa Fluor 488 was diluted at 1:1000 (room temperature, 50min). DAPI (blue) 10min.



**Fig4:** Immunofluorescence analysis of HepG2 cells, using TM16G Antibody. The picture on the right is blocked with the synthesized peptide.

Hangzhou Huaan Biotechnology Co., Ltd.

Orders: 0086-571-88062880

Technical: 0086-571-89986345

Service mail: support@huabio.cn

华安生物  
HUABIO  
www.huabio.cn

---

**Note:** All products are "FOR RESEARCH USE ONLY AND ARE NOT INTENDED FOR DIAGNOSTIC OR THERAPEUTIC USE".

---

**Hangzhou Huaan Biotechnology Co., Ltd.**

Orders:0086-571-88062880

Technical:0086-571-89986345

Service mail:support@huabio.cn

