

# Anti-NDUFA4L2 Antibody

ER64131



**Product Type:** Rabbit polyclonal IgG, primary antibodies

**Species reactivity:** Human, Mouse

**Applications:** WB

**Molecular Wt:** 15 kDa

**Description:** Belongs to the complex I NDUFA4 subunit family.

**Immunogen:** The antiserum was produced against synthesized peptide derived from human NDUFA4L2. AA range:38-87

**Positive control:** Adrenal gland, Muscle,

**Database links:** SwissProt: Q9NRX3 Human

**Recommended Dilutions:**

**WB** 1:500-1:2000

**Storage Buffer:** Liquid in PBS containing 50% glycerol, 0.5% BSA and 0.02% sodium azide.

**Storage Instruction:** Store at +4°C after thawing. Aliquot store at -20°C or -80°C. Avoid repeated freeze / thaw cycles.

**Purity:** Immunogen affinity purified.

Hangzhou HuaAn Biotechnology Co.,Ltd.

Orders: 0086-571-88062880

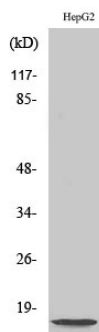
Technical:0086-571-89986345

Service mail: support@huabio.cn

www.huabio.cn



Images



**Fig1:** Western Blot analysis of HepG2 cells using NDUFA4L2 Polyclonal Antibody diluted at 1:2,000

---

**Note:** All products are “FOR RESEARCH USE ONLY AND ARE NOT INTENDED FOR DIAGNOSTIC OR THERAPEUTIC USE”.

---