

Anti-MZF-1 Antibody

ER64094



Product Type:	Rabbit polyclonal IgG, primary antibodies
Species reactivity:	Human
Applications:	WB, IHC-P
Molecular Wt:	82 kDa

Description: May be one regulator of transcriptional events during hemopoietic development. induction:By retinoic acid. Belongs to the krueppel C2H2-type zinc-finger protein family. Contains 1 SCAN box domain. Contains 13 C2H2-type zinc fingers. tissue specificity:Preferentially expressed in differentiating myeloid cells.

Immunogen: The antiserum was produced against synthesized peptide derived from human MZF-1. AA range:1-50

Positive control: Bone marrow,Brain,Epithelium,Skin,

Database links: SwissProt: P28698 Human

Recommended Dilutions:

WB	1:500-1:2000
IHC-P	1:100-1:300

Storage Buffer: Liquid in PBS containing 50% glycerol, 0.5% BSA and 0.02% sodium azide.

Storage Instruction: Store at +4°C after thawing. Aliquot store at -20°C or -80°C. Avoid repeated freeze / thaw cycles.

Purity: Immunogen affinity purified.

Hangzhou Huaan Biotechnology Co., Ltd.

Orders:0086-571-88062880

Technical:0086-571-89986345

Service mail:support@huabio.cn

 华安生物
HUABIO
www.huabio.cn

Images

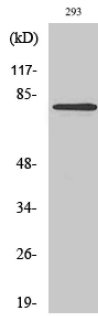


Fig1: Western Blot analysis of 293 cells using MZF-1 Polyclonal Antibody diluted at 1:2,000.

Note: All products are "FOR RESEARCH USE ONLY AND ARE NOT INTENDED FOR DIAGNOSTIC OR THERAPEUTIC USE".

Hangzhou Huaan Biotechnology Co., Ltd.

Orders:0086-571-88062880

Technical:0086-571-89986345

Service mail:support@huabio.cn

华安生物
HUABIO
www.huabio.cn