

Anti-MRP-L20 Antibody

ER64020



Product Type:	Rabbit polyclonal IgG, primary antibodies
Species reactivity:	Human, Mouse, Rat
Applications:	WB, IHC-P
Molecular Wt:	22 kDa

Description: Mammalian mitochondrial ribosomal proteins are encoded by nuclear genes and help in protein synthesis within the mitochondrion. Mitochondrial ribosomes (mitoribosomes) consist of a small 28S subunit and a large 39S subunit. They have an estimated 75% protein to rRNA composition compared to prokaryotic ribosomes, where this ratio is reversed. Another difference between mammalian mitoribosomes and prokaryotic ribosomes is that the latter contain a 5S rRNA. Among different species, the proteins comprising the mitoribosome differ greatly in sequence, and sometimes in biochemical properties, which prevents easy recognition by sequence homology. This gene encodes a 39S subunit protein. A pseudogene corresponding to this gene is found on chromosome 21q. Alternative splicing results in multiple transcript variants encoding different isoforms.

Immunogen: The antiserum was produced against synthesized peptide derived from human MRPL20. AA range:100-149

Positive control: Bone marrow,Lymph,Mammary gland,Whole embryo,

Database links: SwissProt: Q9BYC9 Human

Recommended Dilutions:

WB	1:500-1:2000
IHC-P	1:100-1:300

Storage Buffer: Liquid in PBS containing 50% glycerol, 0.5% BSA and 0.02% sodium azide.

Storage Instruction: Store at +4°C after thawing. Aliquot store at -20°C or -80°C. Avoid repeated freeze / thaw cycles.

Purity: Immunogen affinity purified.



Hangzhou HuaAn Biotechnology Co.,Ltd.

Orders: 0086-571-88062880

Technical:0086-571-89986345

Service mail: support@huabio.cn

www.huabio.cn

Images

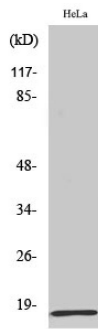


Fig1: Western Blot analysis of HeLa cells using MRP-L20 Polyclonal Antibody

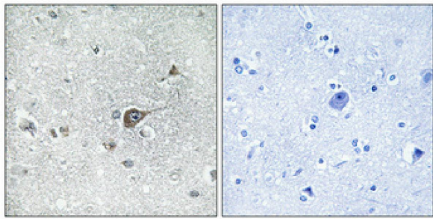


Fig2: Immunohistochemical analysis of paraffin-embedded Human brain. Antibody was diluted at 1:100(4°, overnight). High-pressure and temperature Tris-EDTA, pH8.0 was used for antigen retrieval. Negative contrl (right) obtained from antibody was pre-absorbed by immunogen peptide.

Note: All products are "FOR RESEARCH USE ONLY AND ARE NOT INTENDED FOR DIAGNOSTIC OR THERAPEUTIC USE".