

Anti-MRGX3 Antibody

ER64005



Product Type:	Rabbit polyclonal IgG, primary antibodies
Species reactivity:	Human
Applications:	WB, IF-cell
Molecular Wt:	34 kDa

Description: This gene encodes a member of the mas-related/sensory neuron specific subfamily of G protein coupled receptors. The encoded protein may be involved in sensory neuron regulation and in the modulation of pain.

Immunogen: The antiserum was produced against synthesized peptide derived from human MRGX3. AA range:99-148

Positive control: Testis,

Database links: SwissProt: Q96LB0 Human

Recommended Dilutions:

WB	1:500-1:2000
IF-cell	1:100-1:500

Storage Buffer: Liquid in PBS containing 50% glycerol, 0.5% BSA and 0.02% sodium azide.

Storage Instruction: Store at +4°C after thawing. Aliquot store at -20°C or -80°C. Avoid repeated freeze / thaw cycles.

Purity: Immunogen affinity purified.

Hangzhou Huaan Biotechnology Co., Ltd.

Orders:0086-571-88062880

Technical:0086-571-89986345

Service mail:support@huabio.cn

 华安生物
HUABIO
www.huabio.cn

Images

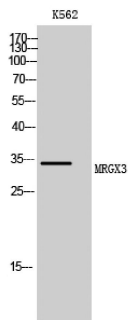


Fig1: Western Blot analysis of K562 cells using MRGX3 Polyclonal Antibody

Note: All products are "FOR RESEARCH USE ONLY AND ARE NOT INTENDED FOR DIAGNOSTIC OR THERAPEUTIC USE".

Hangzhou Huaan Biotechnology Co., Ltd.

Orders:0086-571-88062880

Technical:0086-571-89986345

Service mail:support@huabio.cn

华安生物
HUABIO
www.huabio.cn