

Anti-MP68 Antibody

ER63993



Product Type: Rabbit polyclonal IgG, primary antibodies

Species reactivity: Human, Mouse

Applications: IHC-P

Description: Belongs to the small mitochondrial proteolipid family.

Immunogen: The antiserum was produced against synthesized peptide derived from human MP68. AA range:9-58

Positive control: Fetal liver,Lung,Neuroblastoma,Umbilical cord blood,

Database links: SwissProt: P56378 Human

Recommended Dilutions:

IHC-P 1:100-1:300

Storage Buffer: Liquid in PBS containing 50% glycerol, 0.5% BSA and 0.02% sodium azide.

Storage Instruction: Store at +4℃ after thawing. Aliquot store at -20℃ or -80℃. Avoid repeated freeze / thaw cycles.

Purity: Immunogen affinity purified.

Hangzhou Huaan Biotechnology Co., Ltd.

Orders:0086-571-88062880

Technical:0086-571-89986345

Service mail:support@huabio.cn

 华安生物
HUABIO
www.huabio.cn

Applications:WB=Western blot IHC-P=Immunohistochemistry (paraffin) IF-Cell=Immunofluorescence (Cell) IF-Tissue=Immunofluorescence (Tissue) FC=Flow cytometry IP=Immunoprecipitation

Images

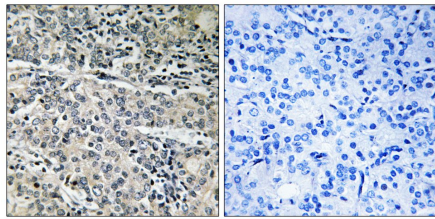


Fig1: Immunohistochemistry analysis of paraffin-embedded human prostate carcinoma tissue, using MP68 Antibody. The picture on the right is blocked with the synthesized peptide.

Note: All products are "FOR RESEARCH USE ONLY AND ARE NOT INTENDED FOR DIAGNOSTIC OR THERAPEUTIC USE".

Hangzhou Huaan Biotechnology Co., Ltd.

Orders:0086-571-88062880

Technical:0086-571-89986345

Service mail:support@huabio.cn

 华安生物
HUABIO
www.huabio.cn