

Anti-LAP1B Antibody

ER63840



Product Type:	Rabbit polyclonal IgG, primary antibodies
Species reactivity:	Human
Applications:	WB
Molecular Wt:	66 kDa

Description: This gene encodes a type 2 integral membrane protein that binds A- and B-type lamins. The encoded protein localizes to the inner nuclear membrane and may be involved in maintaining the attachment of the nuclear membrane to the nuclear lamina during cell division. Alternate splicing results in multiple transcript variants.

Immunogen: The antiserum was produced against synthesized peptide derived from human TOR1AIP1. AA range:431-480

Positive control: Cervix, Embryo, Epithelium, Liver, Ovarian carcinoma, Peripheral blood, U

Database links: SwissProt: Q5JTV8 Human

Recommended Dilutions:
WB 1:500-1:2000

Storage Buffer: Liquid in PBS containing 50% glycerol, 0.5% BSA and 0.02% sodium azide.

Storage Instruction: Store at +4°C after thawing. Aliquot store at -20°C or -80°C. Avoid repeated freeze / thaw cycles.

Purity: Immunogen affinity purified.

Hangzhou HuaAn Biotechnology Co.,Ltd.

Orders: 0086-571-88062880

Technical:0086-571-89986345

Service mail: support@huabio.cn

www.huabio.cn



Images

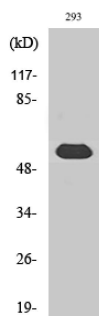


Fig1: Western Blot analysis of 293 cells using LAP1B Polyclonal Antibody.

Note: All products are "FOR RESEARCH USE ONLY AND ARE NOT INTENDED FOR DIAGNOSTIC OR THERAPEUTIC USE".