

Anti-HORMAD1 Antibody

ER63702



Product Type:	Rabbit polyclonal IgG, primary antibodies
Species reactivity:	Human
Applications:	WB
Molecular Wt:	45 kDa

Description: This gene encodes a HORMA domain-containing protein. HORMA domains are involved in chromatin binding and play a role in cell cycle regulation. The encoded protein may play a role in meiosis, and expression of this gene is a potential marker for cancer. A pseudogene of this gene is located on the long arm of chromosome 6. Alternatively spliced transcript variants encoding multiple isoforms have been observed for this gene.

Immunogen: The antiserum was produced against synthesized peptide derived from human HORMAD1. AA range:321-370

Positive control: Testis,

Database links: SwissProt: Q86X24 Human

Recommended Dilutions:
WB 1:500-1:2000

Storage Buffer: Liquid in PBS containing 50% glycerol, 0.5% BSA and 0.02% sodium azide.

Storage Instruction: Store at +4°C after thawing. Aliquot store at -20°C or -80°C. Avoid repeated freeze / thaw cycles.

Purity: Immunogen affinity purified.

Hangzhou HuaAn Biotechnology Co.,Ltd.

Orders: 0086-571-88062880

Technical:0086-571-89986345

Service mail: support@huabio.cn

www.huabio.cn



Applications: WB=Western blot IP=Immunoprecipitation IHC=Immunohistochemistry IF=Immunofluorescence FC=Flow cytometry

Images

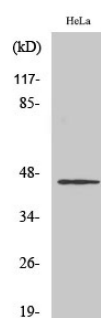


Fig1: Western Blot analysis of HeLa cells using HORMAD1 Polyclonal Antibody cells nucleus extracted by Minute TM Cytoplasmic and Nuclear Fractionation kit (SC-003, Inventbiotech, MN, USA).

Note: All products are “FOR RESEARCH USE ONLY AND ARE NOT INTENDED FOR DIAGNOSTIC OR THERAPEUTIC USE”.