

Anti-GPRC5D Antibody

ER63621



| | |
|----------------------------|---|
| Product Type: | Rabbit polyclonal IgG, primary antibodies |
| Species reactivity: | Human, Mouse |
| Applications: | WB, IF-cell |
| Molecular Wt: | 43 kDa |

Description: The protein encoded by this gene is a member of the G protein-coupled receptor family; however, the specific function of this gene has not yet been determined.

Immunogen: The antiserum was produced against synthesized peptide derived from human GPRC5D. AA range:271-320

Positive control: Skin, Testis,

Database links: SwissProt: Q9NZD1 Human

Recommended Dilutions:

| | |
|----------------|--------------|
| WB | 1:500-1:2000 |
| IF-cell | 1:100-1:500 |

Storage Buffer: Liquid in PBS containing 50% glycerol, 0.5% BSA and 0.02% sodium azide.

Storage Instruction: Store at +4℃ after thawing. Aliquot store at -20℃ or -80℃. Avoid repeated freeze / thaw cycles.

Purity: Immunogen affinity purified.

Hangzhou Huaan Biotechnology Co., Ltd.

Orders: 0086-571-88062880

Technical: 0086-571-89986345

Service mail: support@huabio.cn

 华安生物
HUABIO
www.huabio.cn

Applications: WB=Western blot IHC-P=Immunohistochemistry (paraffin) IF-Cell=Immunofluorescence (Cell) IF-Tissue=Immunofluorescence (Tissue) FC=Flow cytometry IP=Immunoprecipitation

Images

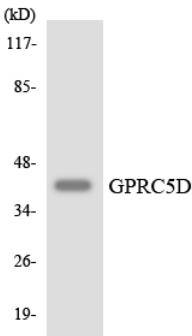


Fig1: Western blot analysis of the lysates from HUVECcells using GPRC5D antibody.

Note: All products are “FOR RESEARCH USE ONLY AND ARE NOT INTENDED FOR DIAGNOSTIC OR THERAPEUTIC USE”.

Hangzhou Huaan Biotechnology Co.,Ltd.

Orders:0086-571-88062880

Technical:0086-571-89986345

Service mail:support@huabio.cn

华安生物
HUABIO
www.huabio.cn

Applications:WB=Western blot IHC-P=Immunohistochemistry (paraffin) IF-Cell=Immunofluorescence (Cell) IF-Tissue=Immunofluorescence (Tissue) FC=Flow cytometry IP=Immunoprecipitation