

Anti-GPR135 Antibody

ER63570



Product Type:	Rabbit polyclonal IgG, primary antibodies
Species reactivity:	Human, Mouse, Rat
Applications:	WB, IHC-P, IF-cell
Molecular Wt:	48 kDa

Description: Orphan receptor. Belongs to the G-protein coupled receptor 1 family.

Immunogen: The antiserum was produced against synthesized peptide derived from human GPR135. AA range:371-420

Positive control: Testis,

Database links: SwissProt: Q8IZ08 Human

Recommended Dilutions:

WB	1:500-1:2000
IHC-P	1:100-1:300
IF-cell	1:100-1:500

Storage Buffer: Liquid in PBS containing 50% glycerol, 0.5% BSA and 0.02% sodium azide.

Storage Instruction: Store at +4°C after thawing. Aliquot store at -20°C or -80°C. Avoid repeated freeze / thaw cycles.

Purity: Immunogen affinity purified.

Hangzhou Huaan Biotechnology Co., Ltd.

Orders:0086-571-88062880

Technical:0086-571-89986345

Service mail:support@huabio.cn

 华安生物
HUABIO
www.huabio.cn

Images

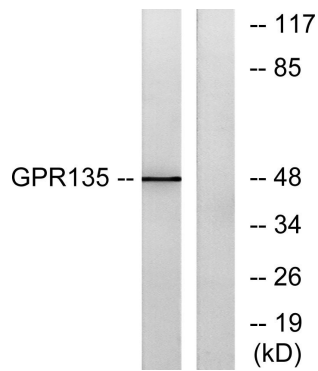


Fig1: Western blot analysis of lysates from NIH/3T3 cells, using GPR135 Antibody. The lane on the right is blocked with the synthesized peptide.

Note: All products are "FOR RESEARCH USE ONLY AND ARE NOT INTENDED FOR DIAGNOSTIC OR THERAPEUTIC USE".

Hangzhou Huaan Biotechnology Co., Ltd.

Orders:0086-571-88062880

Technical:0086-571-89986345

Service mail:support@huabio.cn

华安生物
HUABIO
www.huabio.cn