

# Anti-GIDRP88 Antibody

ER63532



**Product Type:** Rabbit polyclonal IgG, primary antibodies  
**Species reactivity:** Human, Mouse, Monkey  
**Applications:** WB, IHC-P  
**Molecular Wt:** 88 kDa

**Description:** tissue specificity:Expressed in placenta.

**Immunogen:** The antiserum was produced against synthesized peptide derived from human GIDRP88. AA range:721-770

**Positive control:** Cerebellum,Ovary,PCR rescued clones,Placenta,

**Database links:** SwissProt: Q7Z5L2 Human

## Recommended Dilutions:

**WB** 1:500-1:2000  
**IHC-P** 1:100-1:300

**Storage Buffer:** Liquid in PBS containing 50% glycerol, 0.5% BSA and 0.02% sodium azide.

**Storage Instruction:** Store at +4°C after thawing. Aliquot store at -20°C or -80°C. Avoid repeated freeze / thaw cycles.

**Purity:** Immunogen affinity purified.

Hangzhou HuaAn Biotechnology Co.,Ltd.

Orders: 0086-571-88062880

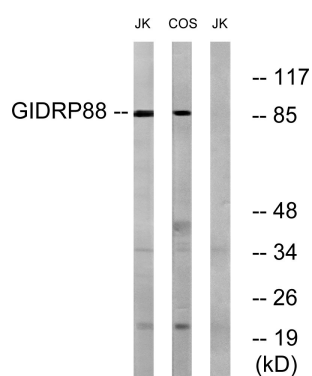
Technical:0086-571-89986345

Service mail: support@huabio.cn

www.huabio.cn



## Images



**Fig1:** Western blot analysis of lysates from Jurkat and COS cells, using GIDRP88 Antibody. The lane on the right is blocked with the synthesized peptide.

**Note:** All products are "FOR RESEARCH USE ONLY AND ARE NOT INTENDED FOR DIAGNOSTIC OR THERAPEUTIC USE".



Hangzhou HuaAn Biotechnology Co.,Ltd.

Orders: 0086-571-88062880

Technical:0086-571-89986345

Service mail: support@huabio.cn

www.huabio.cn

Applications: WB=Western blot IP=Immunoprecipitation IHC=Immunohistochemistry IF=Immunofluorescence FC=Flow cytometry