

Anti-GCP6 Antibody

ER63523



Product Type:	Rabbit polyclonal IgG, primary antibodies
Species reactivity:	Human
Applications:	WB, IHC-P
Molecular Wt:	200 kDa

Description: The protein encoded by this gene is part of a large multisubunit complex required for microtubule nucleation at the centrosome.

Immunogen: The antiserum was produced against synthesized peptide derived from human TUBGCP6. AA range:741-790

Positive control: Brain, Epithelium, Kidney, PCR rescued clones,

Database links: SwissProt: Q96RT7 Human

Recommended Dilutions:

WB	1:500-1:2000
IHC-P	1:100-1:300

Storage Buffer: Liquid in PBS containing 50% glycerol, 0.5% BSA and 0.02% sodium azide.

Storage Instruction: Store at +4°C after thawing. Aliquot store at -20°C or -80°C. Avoid repeated freeze / thaw cycles.

Purity: Immunogen affinity purified.

Hangzhou HuaAn Biotechnology Co.,Ltd.

Orders: 0086-571-88062880

Technical:0086-571-89986345

Service mail: support@huabio.cn

www.huabio.cn



Images

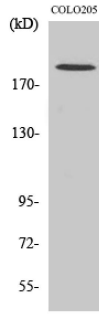


Fig1: Western Blot analysis of COLO205 cells using GCP6 Polyclonal Antibody diluted at 1:1000

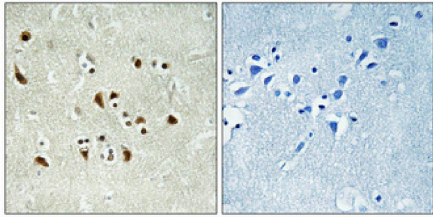


Fig2: Immunohistochemical analysis of paraffin-embedded Human brain. Antibody was diluted at 1:100(4°, overnight). High-pressure and temperature Tris-EDTA, pH8.0 was used for antigen retrieval. Negative contrl (right) obtained from antibody was pre-absorbed by immunogen peptide.

Note: All products are "FOR RESEARCH USE ONLY AND ARE NOT INTENDED FOR DIAGNOSTIC OR THERAPEUTIC USE".