

Anti-eIF4E3 Antibody

ER63336



| | |
|----------------------------|---|
| Product Type: | Rabbit polyclonal IgG, primary antibodies |
| Species reactivity: | Human, Mouse, Rat |
| Applications: | WB |
| Molecular Wt: | 24 kDa |

Description: EIF4E3 belongs to the EIF4E family of translational initiation factors that interact with the 5-prime cap structure of mRNA and recruit mRNA to the ribosome (Joshi et al. 2004)

Immunogen: The antiserum was produced against synthesized peptide derived from human EIF4E3. AA range:141-190

Positive control: Brain,

Database links: SwissProt: Q8N5X7 Human

Recommended Dilutions:
WB 1:500-1:2000

Storage Buffer: Liquid in PBS containing 50% glycerol, 0.5% BSA and 0.02% sodium azide.

Storage Instruction: Store at +4°C after thawing. Aliquot store at -20°C or -80°C. Avoid repeated freeze / thaw cycles.

Purity: Immunogen affinity purified.

Hangzhou Huaan Biotechnology Co., Ltd.

Orders:0086-571-88062880

Technical:0086-571-89986345

Service mail:support@huabio.cn

 华安生物
HUABIO
www.huabio.cn

Images

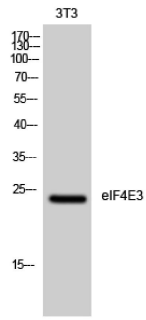


Fig1: Western Blot analysis of 3T3 cells using eIF4E3 Polyclonal Antibody diluted at 1: 1000

Note: All products are "FOR RESEARCH USE ONLY AND ARE NOT INTENDED FOR DIAGNOSTIC OR THERAPEUTIC USE".

Hangzhou Huaan Biotechnology Co., Ltd.

Orders:0086-571-88062880

Technical:0086-571-89986345

Service mail:support@huabio.cn

华安生物
HUABIO
www.huabio.cn