

Anti-eIF1B Antibody

ER63328



Product Type: Rabbit polyclonal IgG, primary antibodies

Species reactivity: Human, Mouse, Rat

Applications: IHC-P

Description: Probably involved in translation. Belongs to the SUI1 family.

Immunogen: Synthesized peptide derived from the N-terminal region of human eIF1B.

Positive control: Blood, Cerebellum, Cerebrum, Kidney, Liver, Pituitary,

Database links: SwissProt: O60739 Human

Recommended Dilutions:

IHC-P 1:100-1:300

Storage Buffer: Liquid in PBS containing 50% glycerol, 0.5% BSA and 0.02% sodium azide.

Storage Instruction: Store at +4°C after thawing. Aliquot store at -20°C or -80°C. Avoid repeated freeze / thaw cycles.

Purity: Immunogen affinity purified.

Hangzhou HuaAn Biotechnology Co.,Ltd.

Orders: 0086-571-88062880

Technical:0086-571-89986345

Service mail: support@huabio.cn

www.huabio.cn



Images

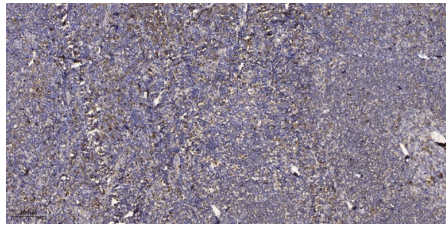


Fig1: Immunohistochemical analysis of paraffin-embedded human tonsil. 1, Antibody was diluted at 1:200(4° overnight). 2, Tris-EDTA,pH9.0 was used for antigen retrieval. 3,Secondary antibody was diluted at 1:200(room temperature, 30min).

Note: All products are “FOR RESEARCH USE ONLY AND ARE NOT INTENDED FOR DIAGNOSTIC OR THERAPEUTIC USE”.
