

Anti-ATG16L2 Antibody

ER62757



Product Type:	Rabbit polyclonal IgG, primary antibodies
Species reactivity:	Human, Mouse
Applications:	WB
Molecular Wt:	70 kDa

Description: May play a role in autophagy. Belongs to the WD repeat ATG16 family. Contains 7 WD repeats.

Immunogen: The antiserum was produced against synthesized peptide derived from human ATG16L2. AA range:241-290

Positive control: Astrocyte,Blood,Eye,Spleen,Stomach,

Subcellular location: Cytoplasm, cytosol . Localizes also to discrete punctae along the ciliary axoneme.

Database links: SwissProt: Q8NAA4 Human

Recommended Dilutions:

WB 1:500-1:2000

Storage Buffer: Liquid in PBS containing 50% glycerol, 0.5% BSA and 0.02% sodium azide.

Storage Instruction: -15℃ to -25℃/1 year(Do not lower than -25℃)

Purity: Immunogen affinity purified.

Hangzhou Huaan Biotechnology Co., Ltd.

Orders:0086-571-88062880

Technical:0086-571-89986345

Service mail:support@huabio.cn

 华安生物
HUABIO
www.huabio.cn

Images

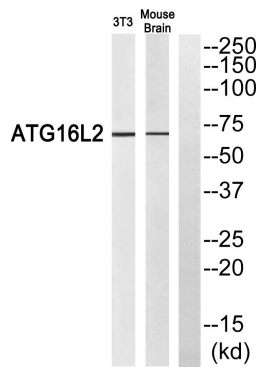


Fig1: Western blot analysis of ATG16L2 Antibody. The lane on the right is blocked with the ATG16L2 peptide.

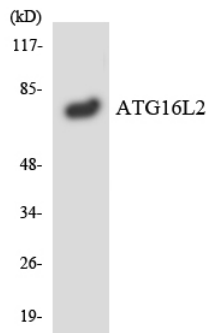


Fig2: Western blot analysis of the lysates from RAW264.7 cells using ATG16L2 antibody.

Note: All products are "FOR RESEARCH USE ONLY AND ARE NOT INTENDED FOR DIAGNOSTIC OR THERAPEUTIC USE".

Hangzhou Huaan Biotechnology Co., Ltd.

Orders:0086-571-88062880

Technical:0086-571-89986345

Service mail:support@huabio.cn

华安生物
HUABIO
www.huabio.cn