

# Anti-ALS2CR13 Antibody

ER62648



<b>Product Type:</b>	Rabbit polyclonal IgG, primary antibodies
<b>Species reactivity:</b>	Human, Mouse
<b>Applications:</b>	WB
<b>Molecular Wt:</b>	60 kDa

**Description:** miscellaneous:ALS2CR13 is mapped in the genomic region covering the complete candidate region for Amyotrophic lateral sclerosis 2 (ALS2). sequence caution:Contaminating sequence. Sequence of unknown origin in the N-terminal part.

**Immunogen:** The antiserum was produced against synthesized peptide derived from human ALS2CR13. AA range:411-460

**Positive control:** Human salivary gland,Kidney,Skin,

**Database links:** SwissProt: Q6P1L5 Human

**Recommended Dilutions:**  
**WB** 1:500-1:2000

**Storage Buffer:** Liquid in PBS containing 50% glycerol, 0.5% BSA and 0.02% sodium azide.

**Storage Instruction:** Store at +4℃ after thawing. Aliquot store at -20℃ or -80℃. Avoid repeated freeze / thaw cycles.

**Purity:** Immunogen affinity purified.

Hangzhou Huaan Biotechnology Co., Ltd.

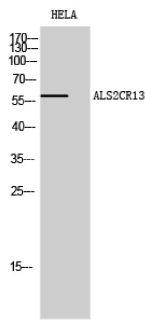
Orders:0086-571-88062880

Technical:0086-571-89986345

Service mail:support@huabio.cn

 华安生物  
HUABIO  
www.huabio.cn

Images



**Fig1:** Western Blot analysis of HELA cells using ALS2CR13 Polyclonal Antibody diluted at 1: 500

**Note:** All products are "FOR RESEARCH USE ONLY AND ARE NOT INTENDED FOR DIAGNOSTIC OR THERAPEUTIC USE".

Hangzhou Huaan Biotechnology Co., Ltd.

Orders:0086-571-88062880

Technical:0086-571-89986345

Service mail:support@huabio.cn

华安生物  
HUABIO  
www.huabio.cn