

Anti-AKR1CL1 Antibody

ER62636



Product Type:	Rabbit polyclonal IgG, primary antibodies
Species reactivity:	Human
Applications:	IF-cell
Molecular Wt:	37 kDa

Description: Belongs to the aldo/keto reductase family.

Immunogen: The antiserum was produced against synthesized peptide derived from human AKR1CL1. AA range:80-129

Positive control: Testis,

Database links: SwissProt: Q5T2L2 Human

Recommended Dilutions:
IF-cell 1:100-1:500

Storage Buffer: Liquid in PBS containing 50% glycerol, 0.5% BSA and 0.02% sodium azide.

Storage Instruction: Store at +4°C after thawing. Aliquot store at -20°C or -80°C. Avoid repeated freeze / thaw cycles.

Purity: Immunogen affinity purified.

Hangzhou Huaan Biotechnology Co., Ltd.

Orders:0086-571-88062880

Technical:0086-571-89986345

Service mail:support@huabio.cn

 华安生物
HUABIO
www.huabio.cn

Images

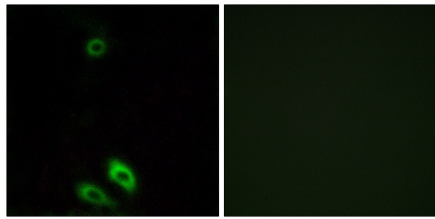


Fig1: Immunofluorescence analysis of A549 cells, using AKR1CL1 Antibody. The picture on the right is blocked with the synthesized peptide.

Note: All products are "FOR RESEARCH USE ONLY AND ARE NOT INTENDED FOR DIAGNOSTIC OR THERAPEUTIC USE".

Hangzhou Huaan Biotechnology Co., Ltd.

Orders:0086-571-88062880

Technical:0086-571-89986345

Service mail:support@huabio.cn

 华安生物
HUABIO
www.huabio.cn