

Anti-4E-BP1 Antibody

ER62532



Product Type:	Rabbit polyclonal IgG, primary antibodies
Species reactivity:	Mouse, Rat, Monkey
Applications:	WB, IHC-P
Molecular Wt:	12 kDa

Description: EIF4EBP1 encodes one member (eukaryotic translation initiation factor 4E binding protein 1) of a family of translation repressor proteins. The protein directly interacts with eukaryotic translation initiation factor 4E (eIF4E), which is a limiting component of the multisubunit complex that recruits 40S ribosomal subunits to the 5' end of mRNAs. Interaction of this protein with eIF4E inhibits complex assembly and represses translation. This protein is phosphorylated in response to various signals including UV irradiation and insulin signaling, resulting in its dissociation from eIF4E and activation of mRNA translation.

Immunogen: The antiserum was produced against synthesized peptide derived from mouse 4E-BP1. AA range:35-84

Database links: SwissProt: Q60876 Mouse

Recommended Dilutions:

WB	1:500-1:2000
IHC-P	1:100-1:300

Storage Buffer: Liquid in PBS containing 50% glycerol, 0.5% BSA and 0.02% sodium azide.

Storage Instruction: Store at +4°C after thawing. Aliquot store at -20°C or -80°C. Avoid repeated freeze / thaw cycles.

Purity: Immunogen affinity purified.

Hangzhou HuaAn Biotechnology Co.,Ltd.

Orders: 0086-571-88062880

Technical:0086-571-89986345

Service mail: support@huabio.cn

www.huabio.cn



Applications: WB=Western blot IP=Immunoprecipitation IHC=Immunohistochemistry IF=Immunofluorescence FC=Flow cytometry

Images

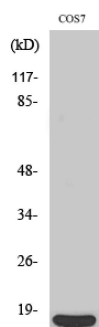


Fig1: Western Blot analysis of COS7 cells using 4E-BP1 Polyclonal Antibody diluted at 1:500.

Note: All products are "FOR RESEARCH USE ONLY AND ARE NOT INTENDED FOR DIAGNOSTIC OR THERAPEUTIC USE".