

Anti-C1QT5 Antibody

ER61900



Product Type:	Rabbit polyclonal IgG, primary antibodies
Species reactivity:	Human, Rat, Mouse
Applications:	WB
Molecular Wt:	26 kDa

Description: This gene encodes a member of a family of proteins that function as components of basement membranes and may play a role in cell adhesion. Mutations in this gene have been associated with late-onset retinal degeneration. The protein may be encoded by either a bicistronic transcript including sequence from the upstream membrane frizzled-related protein gene (MFRP), or by a monocistronic transcript expressed from an internal promoter.

Immunogen: Synthesized peptide derived from part region of human protein

Positive control: Brain,Fetal brain,Uterus,

Database links: SwissProt: Q9BXJ0 Human

Recommended Dilutions:
WB 1:500-1:2000

Storage Buffer: Liquid in PBS containing 50% glycerol, and 0.02% sodium azide.

Storage Instruction: Store at +4°C after thawing. Aliquot store at -20°C or -80°C. Avoid repeated freeze / thaw cycles.

Purity: Immunogen affinity purified.

Hangzhou HuaAn Biotechnology Co.,Ltd.

Orders: 0086-571-88062880

Technical:0086-571-89986345

Service mail: support@huabio.cn

www.huabio.cn



Images

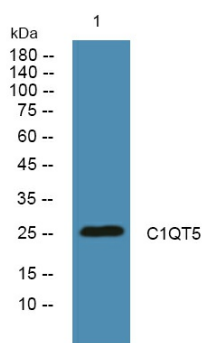


Fig1: Western blot analysis of lysates from SW480 cells, primary antibody was diluted at 1:1000, 4° over night.

Note: All products are "FOR RESEARCH USE ONLY AND ARE NOT INTENDED FOR DIAGNOSTIC OR THERAPEUTIC USE".



Hangzhou HuaAn Biotechnology Co.,Ltd.

Orders: 0086-571-88062880

Technical:0086-571-89986345

Service mail: support@huabio.cn

www.huabio.cn

Applications: WB=Western blot IP=Immunoprecipitation IHC=Immunohistochemistry IF=Immunofluorescence FC=Flow cytometry