

Anti-CPIN1 Antibody

ER61898



Product Type:	Rabbit polyclonal IgG, primary antibodies
Species reactivity:	Human, Rat, Mouse
Applications:	WB
Molecular Wt:	34 kDa

Description: CIAPIN1 is a cytokine-induced inhibitor of apoptosis with no relation to apoptosis regulatory molecules of the BCL2 (MIM 151430) or CASP (see MIM 147678) families. Expression of CIAPIN1 is dependent on growth factor stimulation (Shibayama et al. 2004)

Immunogen: Synthesized peptide derived from part region of human protein

Positive control: Adrenal tumor, Brain, Epithelium, Fetal liver, Placenta, Skin, Testis,

Database links: SwissProt: Q6FI81 Human

Recommended Dilutions:
WB 1:500-1:2000

Storage Buffer: Liquid in PBS containing 50% glycerol, and 0.02% sodium azide.

Storage Instruction: Store at +4°C after thawing. Aliquot store at -20°C or -80°C. Avoid repeated freeze / thaw cycles.

Purity: Immunogen affinity purified.

Hangzhou HuaAn Biotechnology Co.,Ltd.

Orders: 0086-571-88062880

Technical:0086-571-89986345

Service mail: support@huabio.cn

www.huabio.cn



Images

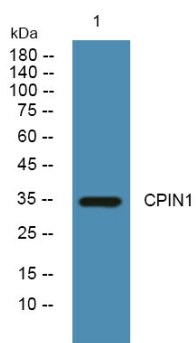


Fig1: Western blot analysis of lysates from SW480 cells, primary antibody was diluted at 1:1000, 4° over night.

Note: All products are "FOR RESEARCH USE ONLY AND ARE NOT INTENDED FOR DIAGNOSTIC OR THERAPEUTIC USE".