

Anti-CPXCR Antibody

ER61518



Product Type:	Rabbit polyclonal IgG, primary antibodies
Species reactivity:	Human
Applications:	WB
Molecular Wt:	33 kDa

Description: This gene is one of several genes identified in a region of the X chromosome associated with an X-linked cleft palate (CPX) disorder. The encoded protein contains a motif similar to a motif found in zinc-finger proteins. Mutation analysis of this gene has not revealed any mutation which causes the CPX disorder. Multiple alternatively spliced variants, encoding the same protein, have been identified.

Immunogen: Synthesized peptide derived from human protein . at AA range: 30-110

Positive control: Testis,

Database links: SwissProt: Q8N123 Human

Recommended Dilutions:
WB 1:500-1:2000

Storage Buffer: Liquid in PBS containing 50% glycerol, and 0.02% sodium azide.

Storage Instruction: Store at +4°C after thawing. Aliquot store at -20°C or -80°C. Avoid repeated freeze / thaw cycles.

Purity: Immunogen affinity purified.

Hangzhou Huaan Biotechnology Co., Ltd.

Orders:0086-571-88062880

Technical:0086-571-89986345

Service mail:support@huabio.cn

 华安生物
HUABIO
www.huabio.cn

Images

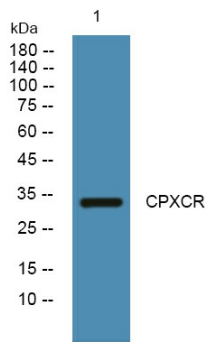


Fig1: Western blot analysis of lysates from HCT116 cells, primary antibody was diluted at 1:1000, 4°over night.

Note: All products are "FOR RESEARCH USE ONLY AND ARE NOT INTENDED FOR DIAGNOSTIC OR THERAPEUTIC USE".

Hangzhou Huaan Biotechnology Co., Ltd.

Orders:0086-571-88062880

Technical:0086-571-89986345

Service mail:support@huabio.cn

华安生物
HUABIO
www.huabio.cn