

# Anti-RAB28 Antibody

## ER61102



<b>Product Type:</b>	Rabbit polyclonal IgG, primary antibodies
<b>Species reactivity:</b>	Human, Rat, Mouse
<b>Applications:</b>	WB
<b>Molecular Wt:</b>	24 kDa

**Description:** This gene encodes a member of the Rab subfamily of Ras-related small GTPases. The encoded protein may be involved in regulating intracellular trafficking. Alternative splicing results in multiple transcript variants. Pseudogenes of this gene are found on chromosomes 9 and X.

**Immunogen:** Synthesized peptide derived from human protein . at AA range: 80-160

**Positive control:** Brain, Testis,

**Database links:** SwissProt: P51157 Human

**Recommended Dilutions:**  
**WB** 1:500-1:2000

**Storage Buffer:** Liquid in PBS containing 50% glycerol, and 0.02% sodium azide.

**Storage Instruction:** Store at +4°C after thawing. Aliquot store at -20°C or -80°C. Avoid repeated freeze / thaw cycles.

**Purity:** Immunogen affinity purified.

Hangzhou Huaan Biotechnology Co., Ltd.

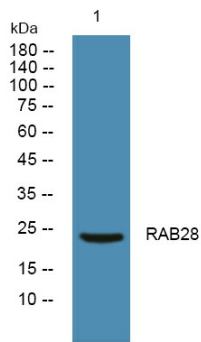
Orders:0086-571-88062880

Technical:0086-571-89986345

Service mail:support@huabio.cn

 华安生物  
HUABIO  
www.huabio.cn

## Images



**Fig1:** Western blot analysis of lysates from A431 cells, primary antibody was diluted at 1:1000, 4° over night.

**Note:** All products are "FOR RESEARCH USE ONLY AND ARE NOT INTENDED FOR DIAGNOSTIC OR THERAPEUTIC USE".

Hangzhou Huaan Biotechnology Co., Ltd.

Orders:0086-571-88062880

Technical:0086-571-89986345

Service mail:support@huabio.cn

华安生物  
HUABIO  
www.huabio.cn