

Anti-SFTPD Antibody

ER61058



| | |
|----------------------------|---|
| Product Type: | Rabbit polyclonal IgG, primary antibodies |
| Species reactivity: | Human, Mouse, Rat |
| Applications: | WB |
| Molecular Wt: | 41 kDa |

Description: The protein encoded by this gene is part of the innate immune response, protecting the lungs against inhaled microorganisms and chemicals. The encoded protein may also be involved in surfactant metabolism.

Immunogen: Synthesized peptide derived from human protein . at AA range: 290-370

Positive control: Amniotic fluid,Lung,Placenta,

Database links: SwissProt: P35247 Human

Recommended Dilutions:
WB 1:500-1:2000

Storage Buffer: Liquid in PBS containing 50% glycerol, and 0.02% sodium azide.

Storage Instruction: Store at +4°C after thawing. Aliquot store at -20°C or -80°C. Avoid repeated freeze / thaw cycles.

Purity: Immunogen affinity purified.

Hangzhou HuaAn Biotechnology Co.,Ltd.

Orders: 0086-571-88062880

Technical:0086-571-89986345

Service mail: support@huabio.cn

www.huabio.cn



Images

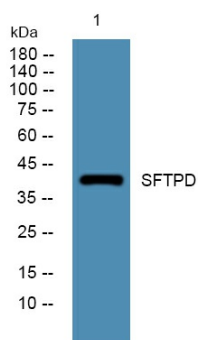


Fig1: Western blot analysis of lysates from Jarkat cells, primary antibody was diluted at 1:1000, 4° over night.

Note: All products are "FOR RESEARCH USE ONLY AND ARE NOT INTENDED FOR DIAGNOSTIC OR THERAPEUTIC USE".



Hangzhou HuaAn Biotechnology Co.,Ltd.

Orders: 0086-571-88062880

Technical:0086-571-89986345

Service mail: support@huabio.cn

www.huabio.cn

Applications: WB=Western blot IP=Immunoprecipitation IHC=Immunohistochemistry IF=Immunofluorescence FC=Flow cytometry