

Anti-NPIP Antibody

ER60942



Product Type:	Rabbit polyclonal IgG, primary antibodies
Species reactivity:	Human
Applications:	WB
Molecular Wt:	38 kDa

Description: Belongs to the NPIP family. Contains 1 GPS domain. subcellular location:Colocalizes with nuclear pore complex protein NUP62. subunit:May associate with the nuclear pore complex. tissue specificity:Widely expressed.

Immunogen: Synthesized peptide derived from human protein . at AA range: 110-190

Positive control: Spleen,

Database links: SwissProt: Q9UND3 Human

Recommended Dilutions:

WB 1:500-1:2000

Storage Buffer: Liquid in PBS containing 50% glycerol, and 0.02% sodium azide.

Storage Instruction: Store at +4°C after thawing. Aliquot store at -20°C or -80°C. Avoid repeated freeze / thaw cycles.

Purity: Immunogen affinity purified.

Hangzhou HuaAn Biotechnology Co.,Ltd.

Orders: 0086-571-88062880

Technical:0086-571-89986345

Service mail: support@huabio.cn

www.huabio.cn



Images

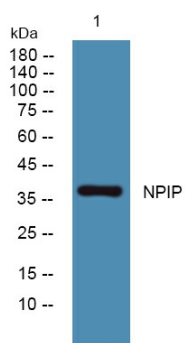


Fig1: Western blot analysis of lysates from Jarkat cells, primary antibody was diluted at 1:1000, 4° over night.

Note: All products are "FOR RESEARCH USE ONLY AND ARE NOT INTENDED FOR DIAGNOSTIC OR THERAPEUTIC USE".



Hangzhou HuaAn Biotechnology Co.,Ltd.

Orders: 0086-571-88062880

Technical:0086-571-89986345

Service mail: support@huabio.cn

www.huabio.cn

Applications: WB=Western blot IP=Immunoprecipitation IHC=Immunohistochemistry IF=Immunofluorescence FC=Flow cytometry