

# Anti-NBAS Antibody

## ER60914



<b>Product Type:</b>	Rabbit polyclonal IgG, primary antibodies
<b>Species reactivity:</b>	Human
<b>Applications:</b>	IHC-P
<b>Molecular Wt:</b>	260 kDa

**Description:** This gene encodes a protein with two leucine zipper domains, a ribosomal protein S14 signature domain and a Sec39 like domain. The protein is thought to be involved in Golgi-to-ER transport. Mutations in this gene are associated with short stature, optic nerve atrophy, and Pelger-Huet anomaly.

**Immunogen:** Synthesized peptide derived from human protein . at AA range: 1880-1960

**Positive control:** Eye,Liver,Neuroblastoma,PNS,Uterus,

**Database links:** SwissProt: A2RRP1 Human

**Recommended Dilutions:**  
**IHC-P** 1:50-300

**Storage Buffer:** Liquid in PBS containing 50% glycerol, and 0.02% sodium azide.

**Storage Instruction:** Store at +4℃ after thawing. Aliquot store at -20℃ or -80℃. Avoid repeated freeze / thaw cycles.

**Purity:** Immunogen affinity purified.

Hangzhou Huaan Biotechnology Co., Ltd.

Orders:0086-571-88062880

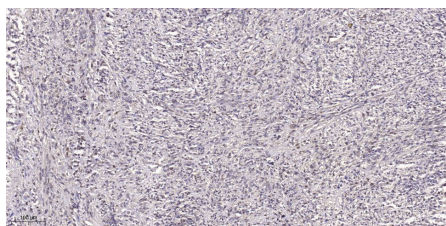
Technical:0086-571-89986345

Service mail:support@huabio.cn

 华安生物  
HUABIO  
www.huabio.cn

Applications:WB=Western blot IHC-P=Immunohistochemistry (paraffin) IF-Cell=Immunofluorescence (Cell) IF-Tissue=Immunofluorescence (Tissue) FC=Flow cytometry IP=Immunoprecipitation

## Images



**Fig1:** Immunohistochemical analysis of paraffin-embedded human small intestinal carcinoma tissue. 1,primary Antibody was diluted at 1:200(4° overnight). 2, Sodium citrate pH 6.0 was used for antigen retrieval(>98℃,20min). 3,Secondary antibody was diluted at 1:233(room temperature).

---

**Note:** All products are “FOR RESEARCH USE ONLY AND ARE NOT INTENDED FOR DIAGNOSTIC OR THERAPEUTIC USE”.

---

Hangzhou Huaan Biotechnology Co.,Ltd.

Orders:0086-571-88062880

Technical:0086-571-89986345

Service mail:support@huabio.cn

华安生物  
HUABIO  
www.huabio.cn

Applications:WB=Western blot IHC-P=Immunohistochemistry (paraffin) IF-Cell=Immunofluorescence (Cell) IF-Tissue=Immunofluorescence (Tissue) FC=Flow cytometry IP=Immunoprecipitation