

# Anti-CT47A Antibody

## ER60213



**Product Type:** Rabbit polyclonal IgG, primary antibodies

**Species reactivity:** Human

**Applications:** WB

**Molecular Wt:** 31 kDa

**Description:** This locus represents a member of the cancer/testis gene family 47. This family, also known as CT47, is comprised of 13 nearly identical loci clustered at Xq24.

**Immunogen:** Synthesized peptide derived from human protein . at AA range: 210-290

**Positive control:** Testis,

**Database links:** SwissProt: Q5JQC4 Human

**Recommended Dilutions:**

**WB** 1:500-1:2000

**Storage Buffer:** Liquid in PBS containing 50% glycerol, and 0.02% sodium azide.

**Storage Instruction:** Store at +4℃ after thawing. Aliquot store at -20℃ or -80℃. Avoid repeated freeze / thaw cycles.

**Purity:** Immunogen affinity purified.

Hangzhou Huaan Biotechnology Co., Ltd.

Orders: 0086-571-88062880

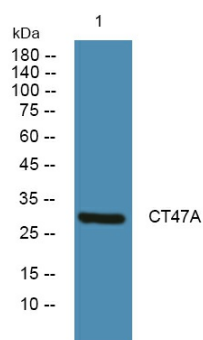
Technical: 0086-571-89986345

Service mail: support@huabio.cn

 华安生物  
HUABIO  
www.huabio.cn

Applications: WB=Western blot IHC-P=Immunohistochemistry (paraffin) IF-Cell=Immunofluorescence (Cell) IF-Tissue=Immunofluorescence (Tissue) FC=Flow cytometry IP=Immunoprecipitation

## Images



**Fig1:** Western blot analysis of lysates from A431 cells, primary antibody was diluted at 1:1000, 4°over night.

**Note:** All products are "FOR RESEARCH USE ONLY AND ARE NOT INTENDED FOR DIAGNOSTIC OR THERAPEUTIC USE".

Hangzhou Huaan Biotechnology Co., Ltd.

Orders:0086-571-88062880

Technical:0086-571-89986345

Service mail:support@huabio.cn

华安生物  
HUABIO  
www.huabio.cn

Applications:WB=Western blot IHC-P=Immunohistochemistry (paraffin) IF-Cell=Immunofluorescence (Cell) IF-Tissue=Immunofluorescence (Tissue) FC=Flow cytometry IP=Immunoprecipitation