

# Anti-RGS19 Antibody

## ER60155



<b>Product Type:</b>	Rabbit polyclonal IgG, primary antibodies
<b>Species reactivity:</b>	Human, Mouse, Rat
<b>Applications:</b>	WB
<b>Molecular Wt:</b>	23 kDa

**Description:** Regulator of G-protein signaling 19 is a protein that in humans is encoded by the RGS19 gene. G proteins mediate a number of cellular processes. The protein encoded by this gene belongs to the RGS (regulators of G-protein signaling) family and specifically interacts with G protein, GAI3. This protein is a guanosine triphosphatase-activating protein that functions to down-regulate G $\alpha$  i/G $\alpha$  q-linked signaling. RGS19 has been shown to interact with GNAO1, GIPC1, OSTM1, GNAI1, GNAI3 and GNAZ. Alternatively spliced transcript variants encoding the same protein isoform have been found for this gene.

**Immunogen:** Synthesized peptide derived from human protein at AA range: 90-170

**Positive control:** Blood, Brain, Placenta, Testis.

**Subcellular location:** Membrane.

**Database links:** SwissProt: P49795 Human

**Recommended Dilutions:**

**WB** 1:500-1:2000

**Storage Buffer:** Liquid in PBS containing 50% glycerol, and 0.02% sodium azide.

**Storage Instruction:** Store at +4℃ after thawing. Aliquot store at -20℃ or -80℃. Avoid repeated freeze / thaw cycles.

**Purity:** Immunogen affinity purified.

**Hangzhou Huaan Biotechnology Co., Ltd.**

Orders: 0086-571-88062880

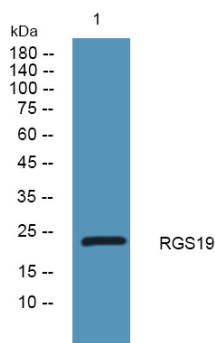
Technical: 0086-571-89986345

Service mail: support@huabio.cn

 华安生物  
HUABIO  
www.huabio.cn

Applications: WB=Western blot IHC-P=Immunohistochemistry (paraffin) IF-Cell=Immunofluorescence (Cell) IF-Tissue=Immunofluorescence (Tissue) FC=Flow cytometry IP=Immunoprecipitation

Images



**Fig1:** Western blot analysis of lysates from K562 cells, primary antibody was diluted at 1:1000, 4°over night.

**Note:** All products are “FOR RESEARCH USE ONLY AND ARE NOT INTENDED FOR DIAGNOSTIC OR THERAPEUTIC USE”.

Hangzhou Huaan Biotechnology Co.,Ltd.

Orders:0086-571-88062880

Technical:0086-571-89986345

Service mail:support@huabio.cn

华安生物  
HUABIO  
www.huabio.cn

Applications:WB=Western blot IHC-P=Immunohistochemistry (paraffin) IF-Cell=Immunofluorescence (Cell) IF-Tissue=Immunofluorescence (Tissue) FC=Flow cytometry IP=Immunoprecipitation