

Anti-Cacna2d1 Antibody

ER60097



Product Type:	Rabbit polyclonal IgG, primary antibodies
Species reactivity:	Rat
Applications:	WB, IHC-P
Molecular Wt:	100-130 kDa

Description: The preproprotein encoded by this gene is cleaved into multiple chains that comprise the alpha-2 and delta subunits of the voltage-dependent calcium channel complex. Calcium channels mediate the influx of calcium ions into the cell upon membrane polarization. Mutations in this gene can cause cardiac deficiencies, including Brugada syndrome and short QT syndrome. Alternate splicing results in multiple transcript variants, some of which may lack the delta subunit portion.

Immunogen: Synthetic Peptide of Cacna2d1.

Positive control: Brain, Liver, Plasma,

Subcellular location: Membrane.

Database links: SwissProt: P54289 Human

Recommended Dilutions:

WB	1:500-1:2000
IHC-P	1:100-1:300

Storage Buffer: Liquid in PBS containing 50% glycerol, 0.5% BSA and 0.02% sodium azide.

Storage Instruction: Store at +4℃ after thawing. Aliquot store at -20℃ or -80℃. Avoid repeated freeze / thaw cycles.

Purity: Immunogen affinity purified.

Hangzhou Huaan Biotechnology Co., Ltd.

Orders: 0086-571-88062880

Technical: 0086-571-89986345

Service mail: support@huabio.cn

华安生物
HUABIO
www.huabio.cn

Applications: WB=Western blot IHC-P=Immunohistochemistry (paraffin) IF-Cell=Immunofluorescence (Cell) IF-Tissue=Immunofluorescence (Tissue) FC=Flow cytometry IP=Immunoprecipitation

Images

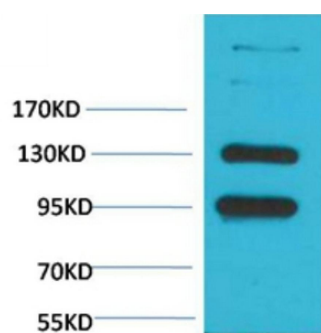


Fig1: Western blot analysis of Rat Brain Tissue with Cacna2d1 Rabbit pAb diluted at 1:2,000.

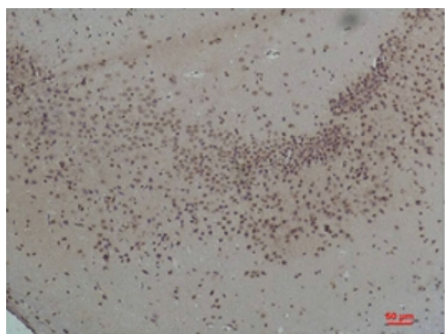


Fig2: Immunohistochemical analysis of paraffin-embedded Rat Brain Tissue using Cacna2d1 Rabbit pAb diluted at 1:200.

Note: All products are "FOR RESEARCH USE ONLY AND ARE NOT INTENDED FOR DIAGNOSTIC OR THERAPEUTIC USE".

Hangzhou Huaan Biotechnology Co., Ltd.

Orders: 0086-571-88062880

Technical: 0086-571-89986345

Service mail: support@huabio.cn

华安生物
HUABIO
www.huabio.cn

Applications: WB=Western blot IHC-P=Immunohistochemistry (paraffin) IF-Cell=Immunofluorescence (Cell) IF-Tissue=Immunofluorescence (Tissue) FC=Flow cytometry IP=Immunoprecipitation