

Anti-Cleaved-Caspase-6 p18 (D162) Antibody

ER60007



Product Type:	Rabbit polyclonal IgG, primary antibodies
Species reactivity:	Mouse, Rat
Applications:	WB, IHC-P
Molecular Wt:	28/35 kDa

Description: CASP6 encodes a member of the cysteine-aspartic acid protease (caspase) family of enzymes. Sequential activation of caspases plays a central role in the execution-phase of cell apoptosis. Caspases exist as inactive proenzymes which undergo proteolytic processing at conserved aspartic acid residues to produce two subunits, large and small, that dimerize to form the active enzyme. Caspase 6 is processed by caspases 7, 8 and 10, and is thought to function as a downstream enzyme in the caspase activation cascade. Alternative splicing of CASP6 results in multiple transcript variants that encode different isoforms.

Immunogen: The antiserum was produced against synthesized peptide derived from mouse Caspase 6. AA range:144-193

Positive control: Highly expressed in lung, liver, kidney, testis, and heart. Lower levels in spleen, skeletal muscle and brain.

Subcellular location: Cytoplasm

Database links: SwissProt: O08738 Mouse

Recommended Dilutions:

WB	1:500-1:2000
IHC-P	1:100-1:300

Storage Buffer: Liquid in PBS containing 50% glycerol, 0.5% BSA and 0.02% sodium azide.

Storage Instruction: Store at +4°C after thawing. Aliquot store at -20°C or -80°C. Avoid repeated freeze / thaw cycles.

Purity: Immunogen affinity purified.



Hangzhou HuaAn Biotechnology Co.,Ltd.

Orders: 0086-571-88062880

Technical:0086-571-89986345

Service mail: support@huabio.cn

www.huabio.cn

Images

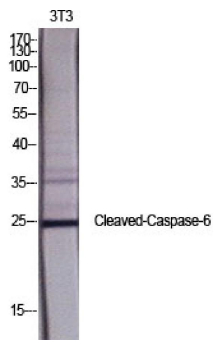


Fig1: Western Blot analysis of mouse 3T3 cells using Cleaved-Caspase-6 p18 (D162) Polyclonal Antibody diluted at 1:1000

Note: All products are "FOR RESEARCH USE ONLY AND ARE NOT INTENDED FOR DIAGNOSTIC OR THERAPEUTIC USE".
