

Anti-PPP2R2A (N-term) Antibody

ER1919-61



Product Type:	Rabbit polyclonal IgG, primary antibodies
Species reactivity:	Human, Mouse, Rat
Applications:	WB
Molecular Wt:	52 kDa

Description: The B regulatory subunit might modulate substrate selectivity and catalytic activity, and also might direct the localization of the catalytic enzyme to a particular subcellular compartment.

Immunogen: This PPP2R2A antibody is generated from a rabbit immunized with a KLH conjugated synthetic peptide between 126-160 amino acids from the N-terminal region of human PPP2R2A.

Database links: SwissProt: P63151 Human | Q6P1F6 Mouse | P36876 Rat

Recommended Dilutions:
WB 1:2,000

Storage Instruction: Store at 4°C short term. Aliquot and store at -20°C long term. Avoid freeze/thaw cycles.

Hangzhou Huaan Biotechnology Co., Ltd.

Orders: 0086-571-88062880

Technical: 0086-571-89986345

Service mail: support@huabio.cn

 华安生物
HUABIO
www.huabio.cn

Applications: WB=Western blot IHC-P=Immunohistochemistry (paraffin) IF-Cell=Immunofluorescence (Cell) IF-Tissue=Immunofluorescence (Tissue) FC=Flow cytometry IP=Immunoprecipitation

Images

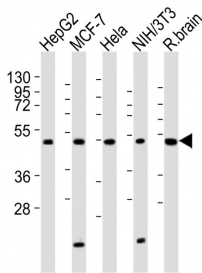


Fig1: All lanes : Anti-PPP2R2A Antibody (N-term) at 1:2,000 dilution Lane 1: HepG2 whole cell lysates Lane 2: MCF-7 whole cell lysates Lane 3: Hela whole cell lysates Lane 4: NIH/3T3 whole cell lysates Lane 5: rat brain lysates Lysates/proteins at 20 µg per lane. Secondary Goat Anti-Rabbit IgG, (H+L), Peroxidase conjugated at 1/10,000 dilution Predicted band size : 52 kDa Blocking/Dilution buffer: 5% NFDM/TBST.

Note: All products are “FOR RESEARCH USE ONLY AND ARE NOT INTENDED FOR DIAGNOSTIC OR THERAPEUTIC USE”.

Hangzhou Huaan Biotechnology Co.,Ltd.

Orders:0086-571-88062880

Technical:0086-571-89986345

Service mail:support@huabio.cn

华安生物
HUABIO
www.huabio.cn

Applications:WB=Western blot IHC-P=Immunohistochemistry (paraffin) IF-Cell=Immunofluorescence (Cell) IF-Tissue=Immunofluorescence (Tissue) FC=Flow cytometry IP=Immunoprecipitation