

# Anti-TMEM59L Antibody

## ER1917-83



|                            |   |
|----------------------------|---|
| <b>Product Type:</b>       | Rabbit polyclonal IgG, primary antibodies |
| <b>Species reactivity:</b> | Human                                     |
| <b>Applications:</b>       | WB  |
| <b>Molecular Wt:</b>       | 35 KDa                                    |

**Description:** Modulates the O-glycosylation and complex N-glycosylation steps occurring during the Golgi maturation of APP. Inhibits APP transport to the cell surface and further shedding.

**Immunogen:** KLH conjugated synthetic peptide derived from human TMEM59L 251-342/342

**Positive control:** Expressed preferentially at high level in the brain.

**Subcellular location:** Golgi apparatus membrane.

**Database links:** SwissProt: Q9UK28 Human

**Recommended Dilutions:**  
**WB** 1:500-2000

**Storage Buffer:** 0.01M TBS(pH7.4) with 1% BSA, 0.03% Proclin300 and 50% Glycerol.

**Storage Instruction:** Store at -20°C for one year. Avoid repeated freeze/thaw cycles. The lyophilized antibody is stable at room temperature for at least one month and for greater than a year when kept at -20°C. When reconstituted in sterile pH 7.4 0.01M PBS or diluent of antibody the antibody is stable for at least two weeks at 2-4°C.

**Purity:** Protein A affinity purified.

Hangzhou Huaan Biotechnology Co., Ltd.

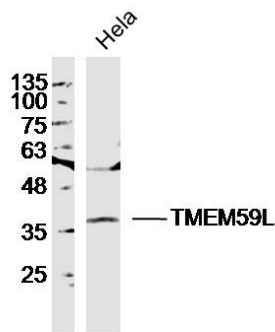
Orders:0086-571-88062880

Technical:0086-571-89986345

Service mail:support@huabio.cn

 华安生物  
HUABIO  
www.huabio.cn

## Images



**Fig1:** Sample: HeLa Cell(Human)Lysate at 30 ug  
Primary: Anti-TMEM59L (ER1917-83)at 1/300 dilution  
Secondary: IRDye800CW Goat Anti-Rabbit IgG at 1/20000 dilution  
Predicted band size: 35kD  
Observed band size: 37kD

**Note:** All products are "FOR RESEARCH USE ONLY AND ARE NOT INTENDED FOR DIAGNOSTIC OR THERAPEUTIC USE".

Hangzhou Huaan Biotechnology Co., Ltd.

Orders:0086-571-88062880

Technical:0086-571-89986345

Service mail:support@huabio.cn

华安生物  
HUABIO  
www.huabio.cn