

Anti-Synaptopodin Antibody

ER1917-40



Product Type:	Rabbit polyclonal IgG, primary antibodies
Species reactivity:	Human, Mouse, Rat
Applications:	WB, IHC-P, IF-Tissue, FC
Molecular Wt:	102 KDa
Immunogen:	KLH conjugated synthetic peptide derived from human Synaptopodin 601-700/903
Positive control:	Expressed in brain, namely in the olfactory bulb, cerebral cortex, striatum, and hippocampus, but not in the cerebellum. Also expressed in the podocytes of kidney glomeruli. In the hippocampus, mainly expressed in the principal cell layer of the dentate gyrus and Ammon's horn.
Subcellular location:	Cytoplasm, cytoskeleton (By similarity). Cell junction, tight junction (By similarity). Perikaryon (By similarity). Cell projection, dendritic spine (By similarity). Cell junction, synapse, postsynaptic cell membrane, postsynaptic density (By similarity). Cell junction, synapse (By similarity). Note=Localized at the tight junction of cells. In brain, localized to the postsynaptic densities and in the perikarya. Associated with dendritic spines of a subset of synapses (By similarity).
Database links:	SwissProt: Q8N3V7 Human
Recommended Dilutions:	
WB	1:500-2000
IHC-P	1:100-500
IF-tissue	1:100-500
FC	1µg /test
Storage Buffer:	0.01M TBS(pH7.4) with 1% BSA, 0.03% Proclin300 and 50% Glycerol.
Storage Instruction:	Store at -20℃ for one year. Avoid repeated freeze/thaw cycles. The lyophilized antibody is stable at room temperature for at least one month and for greater than a year when kept at -20℃. When reconstituted in sterile pH 7.4 0.01M PBS or diluent of antibody the antibody is stable for at least two weeks at 2-4℃.
Purity:	Protein A affinity purified.

Hangzhou Huaan Biotechnology Co., Ltd.

Orders:0086-571-88062880

Technical:0086-571-89986345

Service mail:support@huabio.cn

 华安生物
HUABIO
www.huabio.cn

Applications:WB=Western blot IHC-P=Immunohistochemistry (paraffin) IF-Cell=Immunofluorescence (Cell) IF-Tissue=Immunofluorescence (Tissue) FC=Flow cytometry IP=Immunoprecipitation

Images

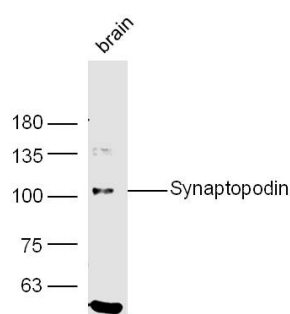


Fig1: Sample: Brain (Mouse) Lysate at 40 ug
 Primary: Anti-Synaptopodin (ER1917-40) at 1/300 dilution
 Secondary: IRDye800CW Goat Anti-Rabbit IgG at 1/20000 dilution
 Predicted band size: 102 kD
 Observed band size: 102 kD

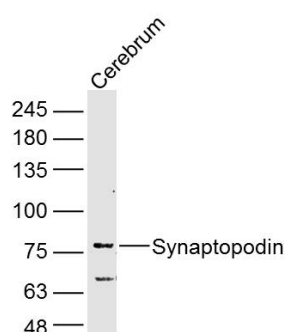


Fig2: Sample: Cerebrum (Rat) Lysate at 40 ug
 Primary: Anti-Synaptopodin (ER1917-40) at 1/300 dilution
 Secondary: IRDye800CW Goat Anti-Rabbit IgG at 1/20000 dilution
 Predicted band size: 102 kD
 Observed band size: 76 kD

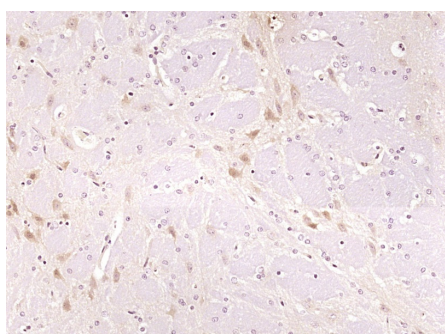


Fig3: Paraformaldehyde-fixed, paraffin embedded (Rat brain);
 Antigen retrieval by boiling in sodium citrate buffer (pH6.0) for 15min; Block endogenous peroxidase by 3% hydrogen peroxide for 20 minutes; Blocking buffer (normal goat serum) at 37°C for 30min; Antibody incubation with (Synaptopodin) Polyclonal Antibody, Unconjugated (ER1917-40) at 1:400 overnight at 4°C, followed by operating according to SP Kit(Rabbit) (sp-0023) instructions and DAB staining.

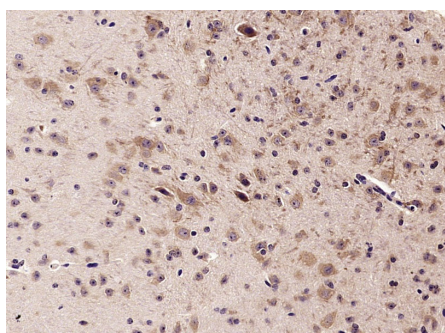


Fig4: Paraformaldehyde-fixed, paraffin embedded (Mouse brain);
 Antigen retrieval by microwave in sodium citrate buffer (pH6.0) ;
 Block endogenous peroxidase by 3% hydrogen peroxide for 30 minutes; Blocking buffer (3% BSA) at RT for 30min; Antibody incubation with (Synaptopodin) Polyclonal Antibody, Unconjugated (ER1917-40) at 1:400 overnight at 4°C, followed by conjugation to the secondary antibody (labeled with HRP) and DAB staining.

Hangzhou Huaan Biotechnology Co., Ltd.

Orders: 0086-571-88062880

Technical: 0086-571-89986345

Service mail: support@huabio.cn

华安生物
HUABIO
www.huabio.cn

Note: All products are "FOR RESEARCH USE ONLY AND ARE NOT INTENDED FOR DIAGNOSTIC OR THERAPEUTIC USE".

Hangzhou Huaan Biotechnology Co., Ltd.

Orders: 0086-571-88062880

Technical: 0086-571-89986345

Service mail: support@huabio.cn

 华安生物
HUAABIO
www.huabio.cn

Applications: WB=Western blot IHC-P=Immunohistochemistry (paraffin) IF-Cell=Immunofluorescence (Cell) IF-Tissue=Immunofluorescence (Tissue) FC=Flow cytometry IP=Immunoprecipitation