

Anti-PTGER2 Antibody

ER1915-56



Product Type:	Rabbit polyclonal IgG, primary antibodies
Species reactivity:	Human, Mouse, Rat
Applications:	WB
Molecular Wt:	40 KDa

Description: Receptor for prostaglandin E2 (PGE2). The activity of this receptor is mediated by G(s) proteins that stimulate adenylate cyclase. The subsequent raise in intracellular cAMP is responsible for the relaxing effect of this receptor on smooth muscle.

Immunogen: KLH conjugated synthetic peptide derived from human Prostaglandin E Receptor EP2 271-358/358

Positive control: Placenta and lung.

Subcellular location: Cell membrane; Multi-pass membrane protein.

Database links: SwissProt: P43116 Human

Recommended Dilutions:

WB 1:500-2000

Storage Buffer: 0.01M TBS(pH7.4) with 1% BSA, 0.03% Proclin300 and 50% Glycerol.

Storage Instruction: Store at -20°C for one year. Avoid repeated freeze/thaw cycles. The lyophilized antibody is stable at room temperature for at least one month and for greater than a year when kept at -20°C. When reconstituted in sterile pH 7.4 0.01M PBS or diluent of antibody the antibody is stable for at least two weeks at 2-4°C.

Purity: Protein A affinity purified.

Hangzhou Huaan Biotechnology Co., Ltd.

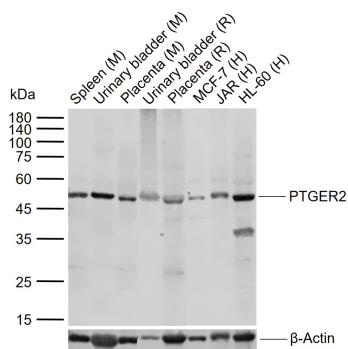
Orders:0086-571-88062880

Technical:0086-571-89986345

Service mail:support@huabio.cn

 华安生物
HUABIO
www.huabio.cn

Images

**Fig1:** Sample:

Lane 1: Mouse Spleen tissue lysates

Lane 2: Mouse Urinary bladder tissue lysates

Lane 3: Mouse Placenta tissue lysates

Lane 4: Rat Urinary bladder tissue lysates

Lane 5: Rat Placenta tissue lysates

Lane 6: Human MCF-7 cell lysates

Lane 7: Human JAR cell lysates

Lane 8: Human HL60 cell lysates

Primary: Anti-PTGER2 (ER1915-56) at 1/1000 dilution

Secondary: IRDye800CW Goat Anti-Rabbit IgG at 1/20000 dilution

Predicted band size: 40 kDa

Observed band size: 48 kDa

Note: All products are "FOR RESEARCH USE ONLY AND ARE NOT INTENDED FOR DIAGNOSTIC OR THERAPEUTIC USE".

Hangzhou Huaan Biotechnology Co., Ltd.

Orders:0086-571-88062880

Technical:0086-571-89986345

Service mail:support@huabio.cn

华安生物
HUABIO
www.huabio.cn