

# Anti-OMA1 Antibody

## ER1914-36



<b>Product Type:</b>	Rabbit polyclonal IgG, primary antibodies
<b>Species reactivity:</b>	Human, Mouse, Rat
<b>Applications:</b>	WB, IHC-P, IF-Tissue
<b>Molecular Wt:</b>	60 KDa

**Description:** Metalloprotease that is part of the quality control system in the inner membrane of mitochondria. Following stress conditions that induce loss of mitochondrial membrane potential, mediates cleavage of OPA1 at S1 position, leading to OPA1 inactivation and negative regulation of mitochondrial fusion. May also cleave UQC3 under these conditions. Its role in mitochondrial quality control is essential for regulating lipid metabolism as well as to maintain body temperature and energy expenditure under cold-stress conditions.

**Immunogen:** KLH conjugated synthetic peptide derived from human OMA1 401-500/524

**Positive control:** Widely expressed, with strong expression in the heart, skeletal muscle, kidney and liver.

**Subcellular location:** Mitochondrion membrane.

**Database links:** SwissProt: Q96E52 Human

### Recommended Dilutions:

<b>WB</b>	1:500-2000
<b>IHC-P</b>	1:100-500
<b>IF-tissue</b>	1:100-500

**Storage Buffer:** 0.01M TBS(pH7.4) with 1% BSA, 0.03% Proclin300 and 50% Glycerol.

**Storage Instruction:** Store at -20°C for one year. Avoid repeated freeze/thaw cycles. The lyophilized antibody is stable at room temperature for at least one month and for greater than a year when kept at -20°C. When reconstituted in sterile pH 7.4 0.01M PBS or diluent of antibody the antibody is stable for at least two weeks at 2-4°C.

**Purity:** Protein A affinity purified.

Hangzhou Huaan Biotechnology Co., Ltd.

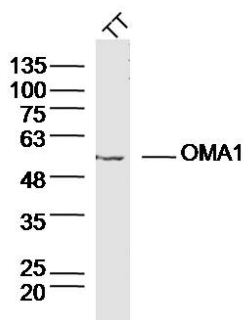
Orders:0086-571-88062880

Technical:0086-571-89986345

Service mail:support@huabio.cn

 华安生物  
HUABIO  
www.huabio.cn

## Images

**Fig1:** Sample:

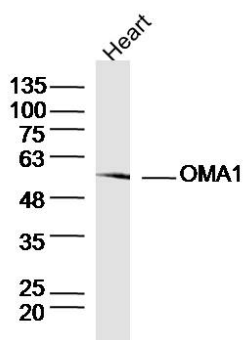
TT Cell (Human) Lysate at 40 ug

Primary: Anti- OMA1 (ER1914-36) at 1/300 dilution

Secondary: IRDye800CW Goat Anti-Rabbit IgG at 1/20000 dilution

Predicted band size: 60 kD

Observed band size: 55 kD

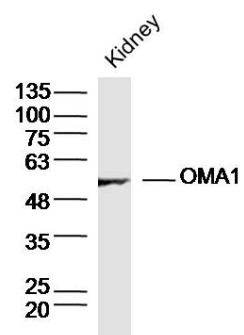
**Fig2:** Sample: Heart (Mouse) Lysate at 40 ug

Primary: Anti- OMA1 (ER1914-36) at 1/300 dilution

Secondary: IRDye800CW Goat Anti-Rabbit IgG at 1/20000 dilution

Predicted band size: 60 kD

Observed band size: 55 kD

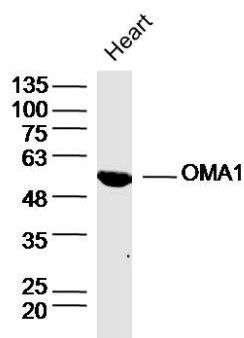
**Fig3:** Sample: Kidney (Mouse) Lysate at 40 ug

Primary: Anti- OMA1 (ER1914-36) at 1/300 dilution

Secondary: IRDye800CW Goat Anti-Rabbit IgG at 1/20000 dilution

Predicted band size: 60 kD

Observed band size: 55 kD

**Fig4:** Sample: Heart (Rat) Lysate at 40 ug

Primary: Anti- OMA1 (ER1914-36) at 1/300 dilution

Secondary: IRDye800CW Goat Anti-Rabbit IgG at 1/20000 dilution

Predicted band size: 60 kD

Observed band size: 55 kD

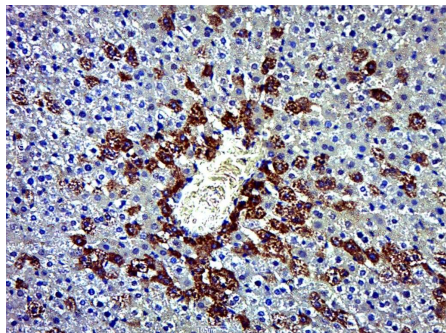
Hangzhou Huaan Biotechnology Co., Ltd.

Orders:0086-571-88062880

Technical:0086-571-89986345

Service mail:support@huabio.cn


 华安生物  
HUABIO  
www.huabio.cn



**Fig5:** Paraformaldehyde-fixed, paraffin embedded (Rat liver); Antigen retrieval by boiling in sodium citrate buffer (pH6.0) for 15min; Block endogenous peroxidase by 3% hydrogen peroxide for 20 minutes; Blocking buffer (normal goat serum) at 37°C for 30min; Antibody incubation with (OMA1) Polyclonal Antibody, Unconjugated (ER1914-36) at 1:500 overnight at 4°C, followed by a conjugated secondary (sp-0023) for 20 minutes and DAB staining.

**Note:** All products are "FOR RESEARCH USE ONLY AND ARE NOT INTENDED FOR DIAGNOSTIC OR THERAPEUTIC USE".

Hangzhou Huaan Biotechnology Co., Ltd.

Orders:0086-571-88062880

Technical:0086-571-89986345

Service mail:support@huabio.cn

华安生物  
HUABIO  
www.huabio.cn