

Anti-MMP-7 Antibody

ER1913-08



Product Type:	Rabbit polyclonal IgG, primary antibodies
Species reactivity:	Human, Mouse
Applications:	WB, IHC-P, IF-Tissue
Molecular Wt:	30 KDa

Description: This gene encodes a member of the peptidase M10 family of matrix metalloproteinases (MMPs). Proteins in this family are involved in the breakdown of extracellular matrix in normal physiological processes, such as embryonic development, reproduction, and tissue remodeling, as well as in disease processes, such as arthritis and metastasis. The encoded preproprotein is proteolytically processed to generate the mature protease. This secreted protease breaks down proteoglycans, fibronectin, elastin and casein and differs from most MMP family members in that it lacks a conserved C-terminal hemopexin domain. The enzyme is involved in wound healing, and studies in mice suggest that it regulates the activity of defensins in intestinal mucosa. The gene is part of a cluster of MMP genes on chromosome 11. This gene exhibits elevated expression levels in multiple human cancers.

Immunogen: KLH conjugated synthetic peptide derived from human MMP7 151-250/269

Positive control: Mouse Uterus Lysate.

Subcellular location: Secreted, extracellular space, extracellular matrix (Probable).

Database links: SwissProt: P09237 Human

Recommended Dilutions:

WB	1:500-2000
IHC-P	1:50-200
IF-tissue	1:50-200: 1:2000-10000

Storage Buffer: 0.01M TBS(pH7.4) with 1% BSA, 0.03% Proclin300 and 50% Glycerol.

Storage Instruction: Store at -20°C for one year. Avoid repeated freeze/thaw cycles. The lyophilized antibody is stable at room temperature for at least one month and for greater than a year when kept at -20°C. When reconstituted in sterile pH 7.4 0.01M PBS or diluent of antibody the antibody is stable for at least two weeks at 2-4°C.

Purity: Protein A affinity purified.

Hangzhou Huaan Biotechnology Co., Ltd.

Orders:0086-571-88062880

Technical:0086-571-89986345

Service mail:support@huabio.cn

 华安生物
HUABIO
www.huabio.cn

Images

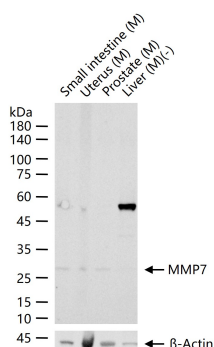


Fig1: 25 ug total protein per lane of various lysates (see on figure) probed with MMP7 polyclonal antibody, unconjugated (ER1913-08) at 1:1000 dilution and 4°C overnight incubation. Followed by conjugated secondary antibody incubation at r.t. for 60 min.

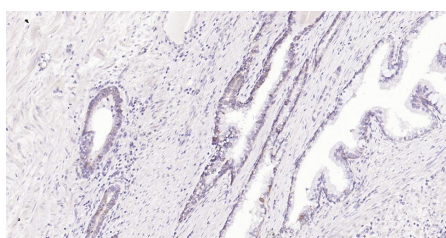


Fig2: Paraformaldehyde-fixed, paraffin embedded Human Prostate; Antigen retrieval by boiling in sodium citrate buffer (pH6.0) for 15 min; Antibody incubation with MMP7 Polyclonal Antibody, Unconjugated (ER1913-08) at 1:200 overnight at 4°C, followed by conjugation to the SP Kit (Rabbit, SP-0023) and DAB (C-0010) staining.

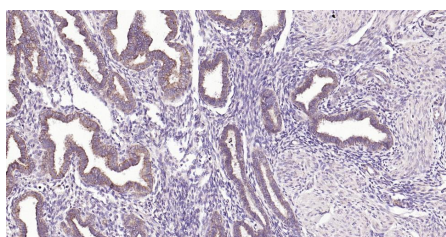


Fig3: Paraformaldehyde-fixed, paraffin embedded Human Endometrium; Antigen retrieval by boiling in sodium citrate buffer (pH6.0) for 15 min; Antibody incubation with MMP7 Polyclonal Antibody, Unconjugated (ER1913-08) at 1:200 overnight at 4°C, followed by conjugation to the SP Kit (Rabbit, SP-0023) and DAB (C-0010) staining.

Note: All products are "FOR RESEARCH USE ONLY AND ARE NOT INTENDED FOR DIAGNOSTIC OR THERAPEUTIC USE".

Hangzhou Huaan Biotechnology Co., Ltd.

Orders:0086-571-88062880

Technical:0086-571-89986345

Service mail:support@huabio.cn

华安生物
HUABIO
www.huabio.cn