

Anti-KLHDC8B Antibody

ER1912-03



Product Type:	Rabbit polyclonal IgG, primary antibodies
Species reactivity:	Human
Applications:	WB
Molecular Wt:	38 KDa
Immunogen:	KLH conjugated synthetic peptide derived from human KLHDC8B 201-300/354
Subcellular location:	Cytoplasm. In mitotic cells, concentrates in the midbody of the cytoplasmic bridge linking daughter cells as they are about to separate during cytokinesis.
Database links:	SwissProt: Q8IXV7 Human
Recommended Dilutions:	
WB	1:500-2000
Storage Buffer:	0.01M TBS(pH7.4) with 1% BSA, 0.03% Proclin300 and 50% Glycerol.
Storage Instruction:	Store at -20°C for one year. Avoid repeated freeze/thaw cycles. The lyophilized antibody is stable at room temperature for at least one month and for greater than a year when kept at -20°C. When reconstituted in sterile pH 7.4 0.01M PBS or diluent of antibody the antibody is stable for at least two weeks at 2-4°C.
Purity:	Protein A affinity purified.

Hangzhou Huaan Biotechnology Co., Ltd.

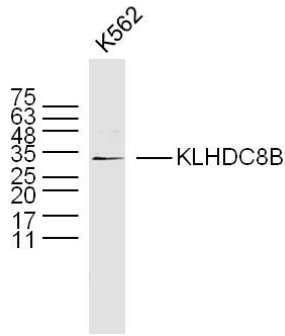
Orders:0086-571-88062880

Technical:0086-571-89986345

Service mail:support@huabio.cn

 华安生物
HUABIO
www.huabio.cn

Images

**Fig1: Sample:**

K562 Cell (Human) Lysate at 30 ug

Primary: Anti- KLHDC8B (ER1912-03) at 1/300 dilution

Secondary: IRDye800CW Goat Anti-Rabbit IgG at 1/20000 dilution

Predicted band size: 38 kD

Observed band size: 34 kD

Note: All products are "FOR RESEARCH USE ONLY AND ARE NOT INTENDED FOR DIAGNOSTIC OR THERAPEUTIC USE".

Hangzhou Huaan Biotechnology Co., Ltd.

Orders: 0086-571-88062880

Technical: 0086-571-89986345

Service mail: support@huabio.cn

华安生物
HUABIO
www.huabio.cn