

Anti-GGT1 Antibody

ER1909-55



Product Type:	Rabbit polyclonal IgG, primary antibodies
Species reactivity:	Human, Mouse, Rat
Applications:	WB
Molecular Wt:	61 KDa
Immunogen:	KLH conjugated synthetic peptide derived from human GGT1 351-460/569
Positive control:	Detected in fetal and adult kidney and liver, adult pancreas, stomach, intestine, placenta and lung. Isoform 3 is lung-specific. There are several other tissue-specific forms that arise from alternative promoter usage but that produce the same protein.
Subcellular location:	Membrane; Single-pass type II membrane protein.
Database links:	SwissProt: P19440 Human
Recommended Dilutions:	
WB	1:500-2000
Storage Buffer:	0.01M TBS(pH7.4) with 1% BSA, 0.03% Proclin300 and 50% Glycerol.
Storage Instruction:	Store at -20°C for one year. Avoid repeated freeze/thaw cycles. The lyophilized antibody is stable at room temperature for at least one month and for greater than a year when kept at -20°C. When reconstituted in sterile pH 7.4 0.01M PBS or diluent of antibody the antibody is stable for at least two weeks at 2-4°C.
Purity:	Protein A affinity purified.

Hangzhou Huaan Biotechnology Co., Ltd.

Orders:0086-571-88062880

Technical:0086-571-89986345

Service mail:support@huabio.cn

 华安生物
HUABIO
www.huabio.cn

Images

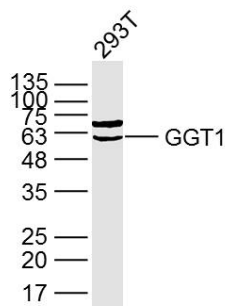


Fig1: Sample: 293T Cell (Human) Lysate at 40 ug
 Primary: Anti-GGT1 (ER1909-55) at 1/300 dilution
 Secondary: IRDye800CW Goat Anti-Rabbit IgG at 1/20000 dilution
 Predicted band size: 61 kD
 Observed band size: 61 kD

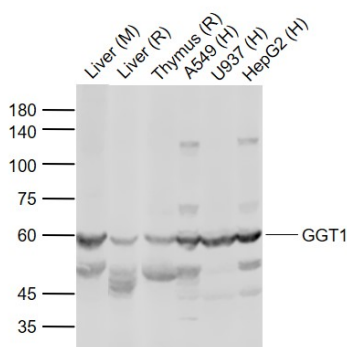


Fig2: Sample:
 Lane 1: Liver (Mouse) Tissue Lysate at 40 ug
 Lane 2: Liver (Rat) Tissue Lysate at 40 ug
 Lane 3: Thymus (Rat) Tissue Lysate at 40 ug
 Lane 4: A549 (Human) Cell Lysate at 30 ug
 Lane 5: U937 (Human) Cell Lysate at 30 ug
 Lane 6: HepG2 (Human) Cell Lysate at 30 ug
 Primary: Anti-GGT1 (ER1909-55) at 1/1000 dilution
 Secondary: IRDye800CW Goat Anti-Rabbit IgG at 1/20000 dilution
 Predicted band size: 61 kD
 Observed band size: 61 kD

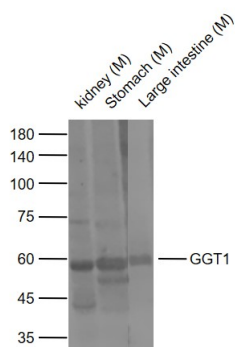


Fig3: Sample:
 Lane 1: Mouse kidney lysates
 Lane 2: Mouse Stomach lysates
 Lane 3: Mouse Large intestine lysates

 Primary: Anti-GGT1 (ER1909-55) at 1/1000 dilution
 Secondary: IRDye800CW Goat Anti-Rabbit IgG at 1/20000 dilution
 Predicted band size: 61 kDa
 Observed band size: 61 kDa

Note: All products are "FOR RESEARCH USE ONLY AND ARE NOT INTENDED FOR DIAGNOSTIC OR THERAPEUTIC USE".

Hangzhou Huaan Biotechnology Co., Ltd.

Orders:0086-571-88062880

Technical:0086-571-89986345

Service mail:support@huabio.cn

华安生物
 HUABIO
 www.huabio.cn