

Anti-GDF15 Antibody

ER1909-46



Product Type:	Rabbit polyclonal IgG, primary antibodies
Species reactivity:	Mouse, Rat
Applications:	WB
Molecular Wt:	12.5/34 kDa

Description: Growth differentiation factor 15 (GDF15) is a member of the bone morphogenetic protein (BMP) family and the TGF-beta superfamily. It has been implicated in a variety of functions directly related to tumorigenicity including antiproliferative and pro-apoptotic effects. BMP proteins are secreted growth factors that are characterized by seven conserved cysteine residues. In general, they are regulators of cell growth and differentiation in both embryonic and adult tissues. GDF15 is an important downstream mediator of DNA damage signaling and a transcriptional target of p53.

Immunogen: KLH conjugated synthetic peptide derived from human GDF-15: 221-308/308

Positive control: Highly expressed in placenta, with lower levels in prostate and colon and some expression in kidney.

Subcellular location: Secreted.

Database links: SwissProt: Q9Z0J7 Mouse | Q9Z0J6 Rat

Recommended Dilutions:

WB 1:500-1:2,000

Storage Buffer: 0.01M TBS (pH7.4) with 1% BSA, 0.02% Proclin300 and 50% Glycerol.

Storage Instruction: Shipped at 4°C. Store at -20°C for one year. Avoid repeated freeze/thaw cycles.

Purity: Protein A affinity purified.

Hangzhou Huaan Biotechnology Co., Ltd.

Orders:0086-571-88062880

Technical:0086-571-89986345

Service mail:support@huabio.cn

 华安生物
HUABIO
www.huabio.cn

Images

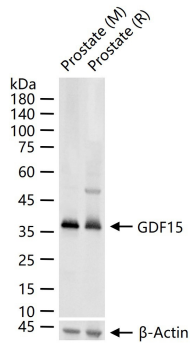


Fig1: 25 ug total protein per lane of various lysates (see on figure) probed with GDF15 polyclonal antibody, unconjugated (ER1909-46) at 1:1,000 dilution and 4°C overnight incubation. Followed by conjugated secondary antibody incubation at r.t. for 60 min.

Note: All products are "FOR RESEARCH USE ONLY AND ARE NOT INTENDED FOR DIAGNOSTIC OR THERAPEUTIC USE".

Hangzhou Huaan Biotechnology Co., Ltd.

Orders:0086-571-88062880

Technical:0086-571-89986345

Service mail:support@huabio.cn

华安生物
HUABIO
www.huabio.cn